



# SERVICE MANUAL

MARINE RADAR

**MXR-5000R**  
**MXR-5000T**

---

---

---

---

S-14901XZ-C1  
Apr. 2012

Icom Inc.

---

## INTRODUCTION

This service manual describes the latest technical information for the **MXR-5000R/MXR-5000T** MARINE RADAR (except scanner unit), at the time of publication.

MODEL	VERSION	SCANNER
MXR-5000R	[USA]	EX-2714
	[EUR]	
	[EXP]	
MXR-5000T	[USA-01]	EX-2780
	[EUR-01]	
	[EXP-01]	

## CAUTION

**NEVER** connect the unit to an AC outlet or to a DC power supply that uses more than the specified voltage. This will ruin the unit.

**DO NOT** reverse the polarities of the power supply when connecting the unit.

To upgrade quality, any electrical or mechanical parts and internal circuits are subject to change without notice or obligation.



## ORDERING PARTS

Be sure to include the following four points when ordering replacement parts:

1. 10-digit Icom part number
2. Component name
3. Equipment model name and unit name
4. Quantity required

### <ORDER EXAMPLE>

8510019230 3173 R-CASE MXR-5000T CHASSIS UNIT 5 pieces  
5910001120 TLA-6T133WLF-T MXR-5000T MAIN UNIT 10 pieces

Addresses are provided on the inside back cover for your convenience.

## REPAIR NOTES

1. Make sure that the problem is internal before disassembling the unit.
2. **DO NOT** open the unit until it is disconnected from its power source.
3. **DO NOT** force any of the variable components. Turn them slowly and smoothly.
4. **DO NOT** short any circuits or electronic parts. An insulated tuning tool **MUST** be used for all adjustments.
5. **DO NOT** keep power ON for a long time when the unit is defective.
6. **READ** the instructions of the test equipment thoroughly before connecting it to the unit.

---

## TABLE OF CONTENTS

---

SECTION	1	SPECIFICATIONS
SECTION	2	INSIDE VIEWS
SECTION	3	PARTS LIST
SECTION	4	MECHANICAL PARTS
SECTION	5	BOARD LAYOUTS
SECTION	6	BLOCK DIAGRAM
SECTION	7	GENERAL WIRING
SECTION	8	VOLTAGE DIAGRAM

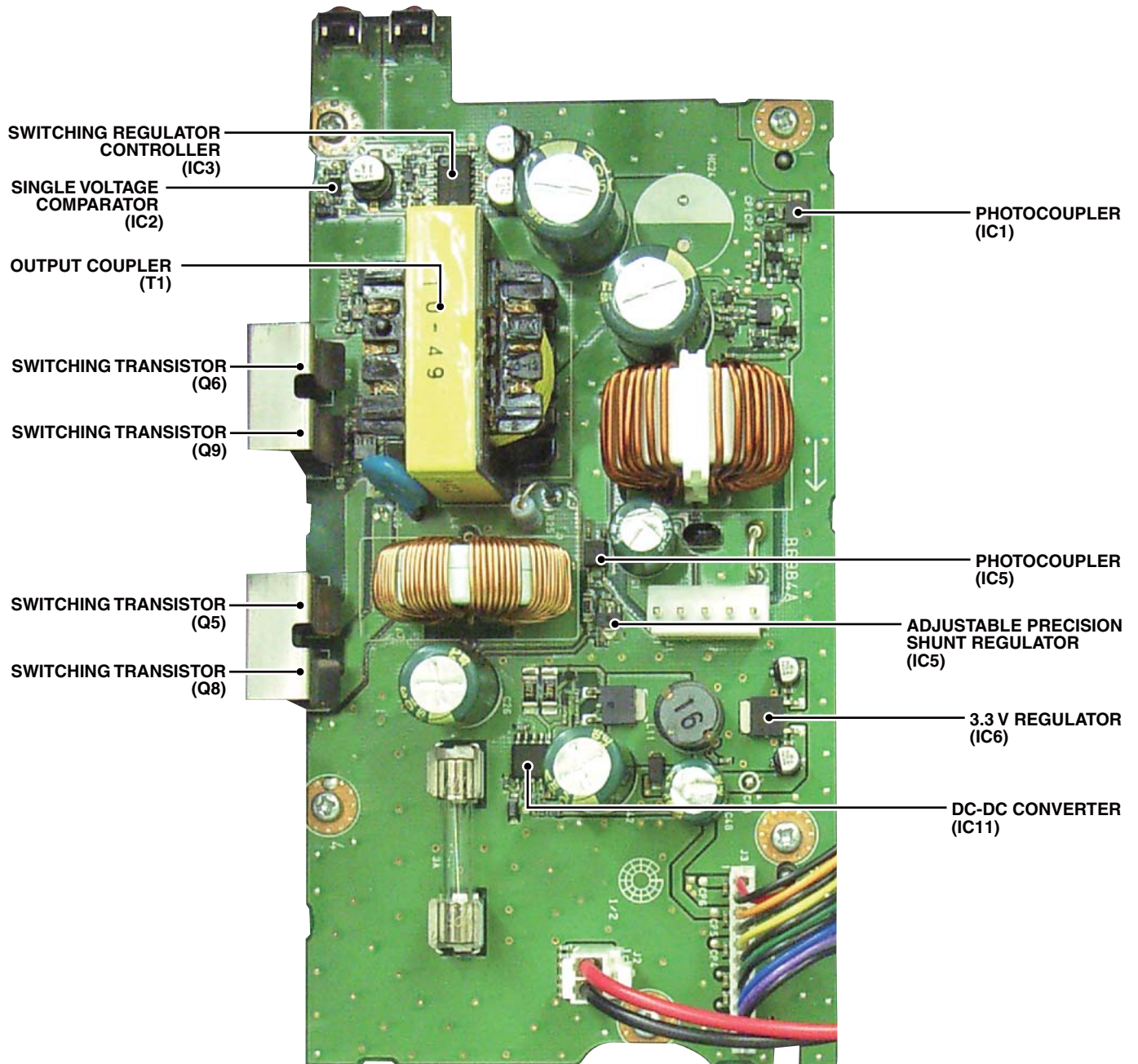
◇ **Radar unit**

- DC input voltage : 10.8 V to 31.2 V DC
- Power consumption : Less than 5.0 A at 12.0 V (MXR-5000R)  
Less than 5.5 A at 12.0 V (MXR-5000T)
- Usable temperature range : -20°C to +60°C; -4°F to 140°F
- Dimensions (projections not included) : 250(W) × 67(H) × 200(D) mm; 9.84(W) × 2.64(H) × 7.87(D) in
- Weight (approx.) : 2.1 kg; 4.63 lb

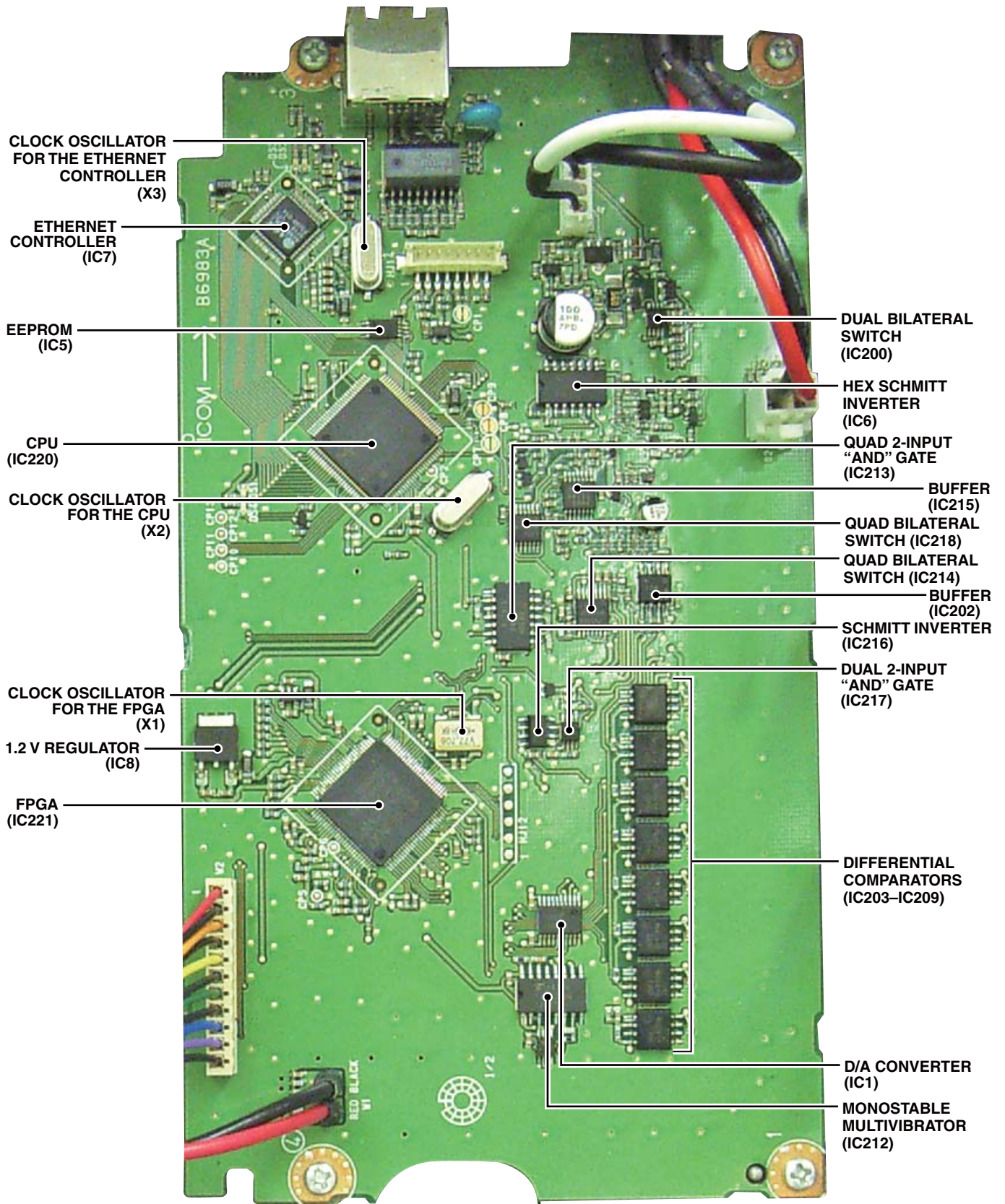
## SECTION 2

## INSIDE VIEWS

### • REG UNIT



• MAIN UNIT



## SECTION 3

## PARTS LIST

## [MAIN UNIT]

REF NO.	PARTS NO.	DESCRIPTION	M.	H/V LOCATION
IC1	1110006360	S.IC M62366GP DF0J	T	42.5/40.0
IC2	1110005731	S.IC S-80928CNMC-G8Y-G	T	132.2/56.8
IC5	1130016400	S.IC BR24T32FVT-WE2	T	132.6/65.4
IC6	1130005291	S.IC TC74HC14AF(ELF)	T	123.5/37.0
IC7	1130014500	S.IC AX88796BLI	T	148.5/80.0
IC8	1180003410	S.REG BD12KA5FF-E2	T	67.9/91.5
IC9	1110002861	S.IC TA75S393F(TE85RF)	T	141.7/39.9
IC11	1180002550	S.REG XC6204B252MR	T	76.5/80.5
IC200	1130009581	S.IC TC7W66FU(TE12LF)	T	134.0/24.0
IC201	1110002751	S.IC TA75S01F(TE85RF)	T	120.0/26.0
IC202	1110003151	S.IC UPC842G2-A	T	92.5/25.0
IC203	1110005700	S.IC TL712CPSR	T	75.0/26.0
IC204	1110005700	S.IC TL712CPSR	T	47.0/26.0
IC205	1110005700	S.IC TL712CPSR	T	68.0/26.0
IC206	1110005700	S.IC TL712CPSR	T	40.0/26.0
IC207	1110005700	S.IC TL712CPSR	T	61.0/26.0
IC208	1110005700	S.IC TL712CPSR	T	33.0/26.0
IC209	1110005700	S.IC TL712CPSR	T	54.0/26.0
IC210	1110005700	S.IC TL712CPSR	T	26.0/26.0
IC211	1130007261	S.IC TC7W74FU(TE12LF)	T	23.5/42.3
IC212	1130005321	S.IC TC74HC123AF(NEWF)	T	31.3/41.3
IC213	1130005252	S.IC TC74HC08AF(ELF)	T	88.5/46.5
IC214	1130011770	S.IC CD4066BPWR	T	89.0/34.5
IC215	1110003780	S.IC NJM2902V-TE1-#ZZZB	T	106.9/36.3
IC216	1130007421	S.IC TC7W14FU(TE12LF)	T	71.0/38.1
IC217	1130006801	S.IC TC7W08F(TE12LF)	T	71.0/43.1
IC218	1130011770	S.IC CD4066BPWR	T	102.0/44.5
IC220	1140014790	S.IC UPD70F3738GC(R)-UEU-AX	T	115.5/67.0
IC221	1140014610	S.IC XC3S200-4VQG100I	T	60.5/67.0
Q200	1590003680	S.TRA KRC402 RTK/P	T	136.4/27.0
Q201	1590002490	S.TRA UMZ2N TR	T	124.0/18.6
Q202	1590002490	S.TRA UMZ2N TR	T	118.7/18.6
Q203	1590003680	S.TRA KRC402 RTK/P	T	115.0/24.5
Q205	1590003680	S.TRA KRC402 RTK/P	T	109.6/25.7
Q206	1530002060	S.TRA 2SC4081 T106 R	T	106.9/30.6
Eqv.	1530004140	S.TRA L2SC4081RT1G <SLVJ>		
Q207	1590003680	S.TRA KRC402 RTK/P	T	77.3/41.1
Q208	1590003680	S.TRA KRC402 RTK/P	T	114.4/44.7
Q209	1590003680	S.TRA KRC402 RTK/P	T	111.9/44.7
Q210	1590003680	S.TRA KRC402 RTK/P	T	109.4/44.1
D200	1750000370	S.DIO DA221 TL	T	141.5/27.0
D201	1750001830	S.VAR SVC389-TL-E	T	138.4/21.8
D202	1750000520	S.DIO DAN222TL	T	113.5/30.9
Eqv.	1750001850	S.DIO LDAN222T1G <SLVJ>		
D203	1730002351	S.ZEN MAZ8110GML	T	123.4/25.0
X1	6050010860	S.XTA DSO-751SV 77.706 MHz<KDS>	T	70.5/55.0
X2	6050012700	S.XTA CR-863(SMD-49/4.9152 MHz) <JJE>	T	105.8/54.2
X3	6050012410	S.XTA CR-751A SMD-49 25.000 MHz <KDS>	T	143.9/67.9
R1	7030003560	S.RES ERJ3GEYJ 103 V (10K)	T	137.4/50.5
R2	7030003560	S.RES ERJ3GEYJ 103 V (10K)	T	137.3/56.4
R3	7030003560	S.RES ERJ3GEYJ 103 V (10K)	T	136.1/59.4
R4	7030003560	S.RES ERJ3GEYJ 103 V (10K)	T	137.4/59.7
R6	7030003560	S.RES ERJ3GEYJ 103 V (10K)	T	102.2/70.6
R8	7030003560	S.RES ERJ3GEYJ 103 V (10K)	T	136.0/56.4
R9	7030003520	S.RES ERJ3GEYJ 472 V (4.7K)	T	45.0/76.5
R10	7030003320	S.RES ERJ3GEYJ 101 V (100)	T	74.6/61.2
R11	7030003320	S.RES ERJ3GEYJ 101 V (100)	T	101.5/64.1
R12	7030003520	S.RES ERJ3GEYJ 472 V (4.7K)	T	45.5/61.7
R13	7030003520	S.RES ERJ3GEYJ 472 V (4.7K)	T	45.5/63.0
R14	7030003520	S.RES ERJ3GEYJ 472 V (4.7K)	T	51.0/74.4
R15	7030003440	S.RES ERJ3GEYJ 102 V (1K)	T	50.6/78.7
R16	7030003580	S.RES ERJ3GEYJ 153 V (15K)	T	48.4/75.9
R17	7030003620	S.RES ERJ3GEYJ 333 V (33K)	T	51.9/77.5
R18	7030003580	S.RES ERJ3GEYJ 153 V (15K)	T	119.5/42.8
R19	7030003680	S.RES ERJ3GEYJ 104 V (100K)	T	124.8/52.7
R20	7030003620	S.RES ERJ3GEYJ 333 V (33K)	T	118.1/40.2
R21	7030003520	S.RES ERJ3GEYJ 472 V (4.7K)	T	139.9/77.4
R22	7030003640	S.RES ERJ3GEYJ 473 V (47K)	T	128.7/60.9
R23	7030003560	S.RES ERJ3GEYJ 103 V (10K)	T	127.4/61.3
R24	7030003800	S.RES ERJ3GEYJ 105 V (1M)	T	143.2/71.2
R25	7030004180	S.RES ERJ3EKF 1212 V (12.1K)	T	150.3/70.6
R26	7030003640	S.RES ERJ3GEYJ 473 V (47K)	T	140.4/76.1
R27	7030003610	S.RES ERJ3GEYJ 273 V (27K)	T	137.9/37.1
R28	7030003560	S.RES ERJ3GEYJ 103 V (10K)	T	137.9/39.9
R29	7030003320	S.RES ERJ3GEYJ 101 V (100)	T	149.6/64.1
R30	7030003560	S.RES ERJ3GEYJ 103 V (10K)	T	139.2/39.9
R31	7030003620	S.RES ERJ3GEYJ 333 V (33K)	T	141.7/42.3
R32	7030003320	S.RES ERJ3GEYJ 101 V (100)	T	149.6/62.8
R33	7030003320	S.RES ERJ3GEYJ 101 V (100)	T	149.6/60.2
R34	7030003320	S.RES ERJ3GEYJ 101 V (100)	T	149.6/61.5
R35	7030003320	S.RES ERJ3GEYJ 101 V (100)	T	149.6/58.8
R36	7030003320	S.RES ERJ3GEYJ 101 V (100)	T	149.6/57.5
R37	7030003320	S.RES ERJ3GEYJ 101 V (100)	T	149.6/56.2
R38	7030003320	S.RES ERJ3GEYJ 101 V (100)	T	149.6/54.9
R39	7030003620	S.RES ERJ3GEYJ 333 V (33K)	T	140.0/36.1
R40	7030003620	S.RES ERJ3GEYJ 333 V (33K)	T	143.7/36.1
R41	7030003540	S.RES ERJ3GEYJ 682 V (6.8K)	T	145.0/40.9
R42	7030003480	S.RES ERJ3GEYJ 222 V (2.2K)	T	145.8/37.5

Eqv.= This component is equivalent to the REF No. component listed above, and may be substituted on parts orders and repairs.

## [MAIN UNIT]

REF NO.	PARTS NO.	DESCRIPTION		M.	H/V LOCATION
R43	7030003680	S.RES	ERJ3GEYJ 104 V (100K)	T	154.5/85.2
R44	7030003380	S.RES	ERJ3GEYJ 331 V (330)	T	107.2/89.1
R45	7030003340	S.RES	ERJ3GEYJ 151 V (150)	T	157.4/51.3
R46	7030003340	S.RES	ERJ3GEYJ 151 V (150)	T	158.7/51.3
R47	7030003380	S.RES	ERJ3GEYJ 331 V (330)	T	161.2/77.3
R48	7030003340	S.RES	ERJ3GEYJ 151 V (150)	T	161.3/51.3
R49	7030003380	S.RES	ERJ3GEYJ 331 V (330)	T	161.2/78.7
R50	7030003440	S.RES	ERJ3GEYJ 102 V (1K)	T	145.0/29.4
R51	7030003340	S.RES	ERJ3GEYJ 151 V (150)	T	160.0/51.3
R52	7030003680	S.RES	ERJ3GEYJ 104 V (100K)	T	136.1/74.0
R53	7030000140	S.RES	MCR10EZHH 10 (100)	T	137.1/32.7
R54	7030001100	S.RES	MCR50JZH 56 (560)	T	137.1/30.3
R55	7030003340	S.RES	ERJ3GEYJ 151 V (150)	T	167.2/50.0
R56	7030003560	S.RES	ERJ3GEYJ 103 V (10K)	T	166.5/77.9
R57	7030003560	S.RES	ERJ3GEYJ 103 V (10K)	T	166.5/79.2
R58	7030003380	S.RES	ERJ3GEYJ 331 V (330)	T	106.0/89.1
R59	7030003440	S.RES	ERJ3GEYJ 102 V (1K)	T	105.4/77.6
R60	7030003680	S.RES	ERJ3GEYJ 104 V (100K)	T	106.7/77.6
R61	7030003640	S.RES	ERJ3GEYJ 473 V (47K)	T	44.2/70.0
R62	7030003640	S.RES	ERJ3GEYJ 473 V (47K)	T	45.5/70.0
R63	7030003640	S.RES	ERJ3GEYJ 473 V (47K)	T	48.1/72.2
R64	7030003640	S.RES	ERJ3GEYJ 473 V (47K)	T	46.8/72.2
R65	7030003640	S.RES	ERJ3GEYJ 473 V (47K)	T	53.2/77.5
R66	7030003640	S.RES	ERJ3GEYJ 473 V (47K)	T	54.5/79.6
R67	7030003640	S.RES	ERJ3GEYJ 473 V (47K)	T	56.5/79.8
R68	7030003640	S.RES	ERJ3GEYJ 473 V (47K)	T	61.7/82.7
R69	7030003640	S.RES	ERJ3GEYJ 473 V (47K)	T	63.1/82.7
R70	7030003640	S.RES	ERJ3GEYJ 473 V (47K)	T	64.4/82.7
R71	7030003640	S.RES	ERJ3GEYJ 473 V (47K)	T	68.0/84.4
R72	7030003640	S.RES	ERJ3GEYJ 473 V (47K)	T	69.3/84.4
R73	7030003640	S.RES	ERJ3GEYJ 473 V (47K)	T	70.6/84.4
R74	7030003640	S.RES	ERJ3GEYJ 473 V (47K)	T	71.9/84.4
R75	7030003640	S.RES	ERJ3GEYJ 473 V (47K)	T	73.2/84.4
R76	7030003640	S.RES	ERJ3GEYJ 473 V (47K)	T	57.7/52.8
R77	7030003640	S.RES	ERJ3GEYJ 473 V (47K)	T	55.9/52.8
R78	7030003640	S.RES	ERJ3GEYJ 473 V (47K)	T	54.6/52.8
R79	7030003640	S.RES	ERJ3GEYJ 473 V (47K)	T	75.8/84.4
R80	7030003640	S.RES	ERJ3GEYJ 473 V (47K)	T	101.6/78.9
R81	7030003640	S.RES	ERJ3GEYJ 473 V (47K)	T	74.5/84.4
R82	7030003640	S.RES	ERJ3GEYJ 473 V (47K)	T	58.8/83.2
R83	7030003640	S.RES	ERJ3GEYJ 473 V (47K)	T	60.1/83.2
R84	7030003640	S.RES	ERJ3GEYJ 473 V (47K)	T	126.1/73.2
R85	7030003680	S.RES	ERJ3GEYJ 104 V (100K)	T	120.9/47.0
R86	7030003680	S.RES	ERJ3GEYJ 104 V (100K)	T	98.1/64.5
R87	7030003680	S.RES	ERJ3GEYJ 104 V (100K)	T	115.9/51.6
R88	7030003680	S.RES	ERJ3GEYJ 104 V (100K)	T	118.0/52.7
R89	7030003680	S.RES	ERJ3GEYJ 104 V (100K)	T	121.4/52.6
R90	7030003680	S.RES	ERJ3GEYJ 104 V (100K)	T	42.1/68.8
R93	7030003560	S.RES	ERJ3GEYJ 103 V (10K)	T	163.8/75.9
R200	7030003500	S.RES	ERJ3GEYJ 332 V (3.3K)	T	129.5/20.8
R201	7030003480	S.RES	ERJ3GEYJ 222 V (2.2K)	T	126.9/20.8
R202	7030000260	S.RES	MCR10EZHH 100 (101)	T	144.0/27.0
R203	7030000260	S.RES	MCR10EZHH 100 (101)	T	145.8/27.0
R204	7030003440	S.RES	ERJ3GEYJ 102 V (1K)	T	136.0/20.8
R205	7030003640	S.RES	ERJ3GEYJ 473 V (47K)	T	138.4/27.0
R206	7030006601	S.RES	ERA3YED 272V (2.7K)	T	124.6/29.9
R207	7030009861	S.RES	ERA3YED 471V (470)	T	123.1/27.3
R208	7030003640	S.RES	ERJ3GEYJ 473 V (47K)	T	119.0/29.9
R209	7030003640	S.RES	ERJ3GEYJ 473 V (47K)	T	121.8/29.9
R210	7030006091	S.RES	ERA3YED 822V (8.2K)	T	119.0/28.6
R211	7030003570	S.RES	ERJ3GEYJ 123 V (12K)	T	117.6/26.4
R212	7030003680	S.RES	ERJ3GEYJ 104 V (100K)	T	117.4/23.6
R213	7030003550	S.RES	ERJ3GEYJ 822 V (8.2K)	T	120.3/22.1
R214	7030003680	S.RES	ERJ3GEYJ 104 V (100K)	T	133.4/20.8
R215	7030003200	S.RES	ERJ3GEYJ 100 V (10)	T	123.1/22.1
R216	7030003520	S.RES	ERJ3GEYJ 472 V (4.7K)	T	120.7/18.6
R217	7030003520	S.RES	ERJ3GEYJ 472 V (4.7K)	T	122.0/18.6
R218	7030003320	S.RES	ERJ3GEYJ 101 V (100)	T	116.0/19.0
R219	7030003800	S.RES	ERJ3GEYJ 105 V (1M)	T	114.1/20.8
R221	7030003560	S.RES	ERJ3GEYJ 103 V (10K)	T	99.3/24.8
R222	7030003680	S.RES	ERJ3GEYJ 104 V (100K)	T	99.3/26.1
R223	7030003680	S.RES	ERJ3GEYJ 104 V (100K)	T	99.3/28.7
R224	7030003650	S.RES	ERJ3GEYJ 563 V (56K)	T	99.3/27.4
R225	7030003620	S.RES	ERJ3GEYJ 333 V (33K)	T	97.3/23.6
R226	7030003570	S.RES	ERJ3GEYJ 123 V (12K)	T	97.3/26.4
R227	7030003560	S.RES	ERJ3GEYJ 103 V (10K)	T	87.7/25.0
R228	7030003560	S.RES	ERJ3GEYJ 103 V (10K)	T	86.4/25.0
R229	7030003680	S.RES	ERJ3GEYJ 104 V (100K)	T	86.9/27.0
R230	7030003680	S.RES	ERJ3GEYJ 104 V (100K)	T	91.7/29.0
R231	7030003300	S.RES	ERJ3GEYJ 680 V (68)	T	69.0/31.5
R232	7030003270	S.RES	ERJ3GEYJ 390 V (39)	T	62.0/31.5
R233	7030003240	S.RES	ERJ3GEYJ 220 V (22)	T	55.0/31.5
R234	7030003210	S.RES	ERJ3GEYJ 120 V (12)	T	48.0/31.5
R235	7030005430	S.RES	ERJ3GEYJ 3R3 V (3.3)	T	41.0/31.5
R236	7030005430	S.RES	ERJ3GEYJ 3R3 V (3.3)	T	34.0/31.5
R237	7030003500	S.RES	ERJ3GEYJ 332 V (3.3K)	T	25.4/31.4
R238	7030003430	S.RES	ERJ3GEYJ 821 V (820)	T	28.2/32.7
R239	7030005631	S.RES	ERA3YKD 154V (150K)	T	24.6/38.8
R240	7030006101	S.RES	ERA3YED 183V (18K)	T	36.7/45.9
R241	7030003440	S.RES	ERJ3GEYJ 102 V (1K)	T	91.1/52.7
R242	7030003440	S.RES	ERJ3GEYJ 102 V (1K)	T	87.2/41.1
R243	7030003510	S.RES	ERJ3GEYJ 392 V (3.9K)	T	91.7/31.0
R244	7030003480	S.RES	ERJ3GEYJ 222 V (2.2K)	T	94.6/31.0
R246	7030003200	S.RES	ERJ3GEYJ 100 V (10)	T	86.2/38.0
R247	7030003500	S.RES	ERJ3GEYJ 332 V (3.3K)	T	89.0/38.0
R248	7030003650	S.RES	ERJ3GEYJ 563 V (56K)	T	111.8/36.7
R249	7030003640	S.RES	ERJ3GEYJ 473 V (47K)	T	115.2/38.9
R250	7030003510	S.RES	ERJ3GEYJ 392 V (3.9K)	T	114.6/33.9

[MAIN UNIT]

REF NO.	PARTS NO.	DESCRIPTION	M.	H/V LOCATION
R251	7030003680	S.RES ERJ3GEYJ 104 V (100K)	T	113.1/36.7
R252	7030003660	S.RES ERJ3GEYJ 683 V (68K)	T	111.8/33.9
R253	7030003580	S.RES ERJ3GEYJ 153 V (15K)	T	115.5/31.0
R254	7030003680	S.RES ERJ3GEYJ 104 V (100K)	T	109.6/27.6
R255	7030003440	S.RES ERJ3GEYJ 102 V (1K)	T	109.6/28.9
R256	7030003520	S.RES ERJ3GEYJ 472 V (4.7K)	T	74.7/35.3
R257	7030003640	S.RES ERJ3GEYJ 473 V (47K)	T	77.3/38.1
R258	7030003560	S.RES ERJ3GEYJ 103 V (10K)	T	67.5/38.1
R259	7030003680	S.RES ERJ3GEYJ 104 V (100K)	T	103.4/41.0
R260	7030003680	S.RES ERJ3GEYJ 104 V (100K)	T	106.9/40.5
R261	7030003680	S.RES ERJ3GEYJ 104 V (100K)	T	109.4/39.8
R262	7030003680	S.RES ERJ3GEYJ 104 V (100K)	T	140.8/23.4
R263	7030003750	S.RES ERJ3GEYJ 394 V (390K)	T	130.8/20.8
R264	7030003680	S.RES ERJ3GEYJ 104 V (100K)	T	128.2/20.8
R266	7030003650	S.RES ERJ3GEYJ 563 V (56K)	T	98.6/38.8
R267	7030003650	S.RES ERJ3GEYJ 563 V (56K)	T	103.4/39.7
R268	7030005731	S.RES ERA3YKD 823V (82K)	T	99.3/30.0
R269	7030003800	S.RES ERJ3GEYJ 105 V (1M)	T	99.3/32.6
R270	7030003800	S.RES ERJ3GEYJ 105 V (1M)	T	99.3/31.3
R271	7030007911	S.RES ERA3YKD 563V (56K)	T	99.3/33.9
R272	7030005671	S.RES ERA3YKD 393V (39K)	T	100.0/36.0
R273	7030007911	S.RES ERA3YKD 563V (56K)	T	102.2/32.6
R274	7030003530	S.RES ERJ3GEYJ 562 V (5.6K)	T	102.2/30.0
R275	7030003480	S.RES ERJ3GEYJ 222 V (2.2K)	T	102.2/28.7
R284	7030004050	S.RES ERJ3GEYJ 1R0 V (1)	T	90.2/41.1
R285	7030003690	S.RES ERJ3GEYJ 124 V (120K)	T	115.6/42.3
R286	7030003650	S.RES ERJ3GEYJ 563 V (56K)	T	113.1/42.3
R287	7030003610	S.RES ERJ3GEYJ 273 V (27K)	T	111.0/41.9
R288	7030003750	S.RES ERJ3GEYJ 394 V (390K)	T	115.2/37.6
R290	7030003680	S.RES ERJ3GEYJ 104 V (100K)	T	100.0/38.8
C1	4030011600	S.CER C1608 JB 1E 104K-T	T	39.7/44.3
C2	4030008890	S.CER C1608 JB 1H 273K-T	T	132.6/59.2
C3	4030011600	S.CER C1608 JB 1E 104K-T	T	45.3/44.2
C4	4030011600	S.CER C1608 JB 1E 104K-T	T	73.2/74.3
C5	4030011600	S.CER C1608 JB 1E 104K-T	T	65.6/78.7
C6	4030011600	S.CER C1608 JB 1E 104K-T	T	57.3/81.1
C7	4030011600	S.CER C1608 JB 1E 104K-T	T	44.2/72.8
C8	4030011600	S.CER C1608 JB 1E 104K-T	T	50.0/60.5
C10	4030011600	S.CER C1608 JB 1E 104K-T	T	52.5/54.1
C11	4030011600	S.CER C1608 JB 1E 104K-T	T	134.7/59.3
C12	4030007050	S.CER C1608 CH 1H 220J-T	T	107.7/58.8
C13	4030011600	S.CER C1608 JB 1E 104K-T	T	66.2/54.3
C14	4030011600	S.CER C1608 JB 1E 104K-T	T	72.5/61.9
C15	4030011600	S.CER C1608 JB 1E 104K-T	T	73.9/55.0
C16	4030007050	S.CER C1608 CH 1H 220J-T	T	107.3/57.4
C17	4030018910	S.CER C1608 JB 0J 475K-T	T	104.9/60.8
C18	4030011600	S.CER C1608 JB 1E 104K-T	T	122.4/77.0
C19	4030011600	S.CER C1608 JB 1E 104K-T	T	123.7/77.0
C20	4030011600	S.CER C1608 JB 1E 104K-T	T	102.8/61.3
C21	4030011600	S.CER C1608 JB 1E 104K-T	T	101.5/61.3
C22	4030011600	S.CER C1608 JB 1E 104K-T	T	122.0/56.6
C23	4550007480	S.TAN F930J106MAABMA	T	122.3/54.9
Eqv.	4550006050	S.TAN TEESVA 0J 106M8R		
C24	4030011600	S.CER C1608 JB 1E 104K-T	T	135.1/63.2
C25	4030007070	S.CER C1608 CH 1H 330J-T	T	144.7/72.6
C26	4030007070	S.CER C1608 CH 1H 330J-T	T	146.1/71.2
C27	4550007480	S.TAN F930J106MAABMA	T	136.3/71.5
Eqv.	4550006050	S.TAN TEESVA 0J 106M8R		
C28	4030011600	S.CER C1608 JB 1E 104K-T	T	66.4/80.0
C29	4030011600	S.CER C1608 JB 1E 104K-T	T	142.6/74.0
C30	4030011600	S.CER C1608 JB 1E 104K-T	T	45.5/72.8
C31	4030011600	S.CER C1608 JB 1E 104K-T	T	137.4/74.0
C32	4030011600	S.CER C1608 JB 1E 104K-T	T	53.5/55.4
C33	4030011600	S.CER C1608 JB 1E 104K-T	T	138.7/74.0
C34	4030011600	S.CER C1608 JB 1E 104K-T	T	72.5/60.6
C35	4030011600	S.CER C1608 JB 1E 104K-T	T	157.0/73.9
C36	4550007480	S.TAN F930J106MAABMA	T	154.6/69.8
Eqv.	4550006050	S.TAN TEESVA 0J 106M8R		
C37	4550007480	S.TAN F930J106MAABMA	T	66.0/86.9
Eqv.	4550006050	S.TAN TEESVA 0J 106M8R		
C38	4030011600	S.CER C1608 JB 1E 104K-T	T	151.6/70.6
C39	4030011600	S.CER C1608 JB 1E 104K-T	T	62.1/90.1
C40	4030011600	S.CER C1608 JB 1E 104K-T	T	152.9/70.6
C41	4030011600	S.CER C1608 JB 1E 104K-T	T	147.5/61.0
C42	4030011600	S.CER C1608 JB 1E 104K-T	T	62.1/92.9
C43	4030011600	S.CER C1608 JB 1E 104K-T	T	158.4/70.6
C44	4030011600	S.CER C1608 JB 1E 104K-T	T	140.0/37.5
C45	4550007480	S.TAN F930J106MAABMA	T	156.7/69.8
Eqv.	4550006050	S.TAN TEESVA 0J 106M8R		
C46	4030011600	S.CER C1608 JB 1E 104K-T	T	71.7/73.0
C47	4030011600	S.CER C1608 JB 1E 104K-T	T	143.7/37.5
C48	4030011600	S.CER C1608 JB 1E 104K-T	T	147.5/58.0
C49	4030011600	S.CER C1608 JB 1E 104K-T	T	49.2/78.7
C50	4030011600	S.CER C1608 JB 1E 104K-T	T	48.3/58.1
C51	4030006900	S.CER C1608 JB 1H 103K-T	T	151.2/65.4
C52	4030011600	S.CER C1608 JB 1E 104K-T	T	159.1/75.5
C53	4030011600	S.CER C1608 JB 1E 104K-T	T	66.2/55.7
C54	4030011600	S.CER C1608 JB 1E 104K-T	T	151.2/53.6
C55	4550007480	S.TAN F930J106MAABMA	T	160.4/73.8
Eqv.	4550006050	S.TAN TEESVA 0J 106M8R		
C56	4550003030	S.TAN TEESVA 0J 475M8R	T	76.5/77.5
Eqv.	4550007230	S.TAN F930J475MAABMA		
C57	4030006860	S.CER C1608 JB 1H 102K-T	T	145.0/39.6
C58	4030011600	S.CER C1608 JB 1E 104K-T	T	74.0/80.2
C59	4030011600	S.CER C1608 JB 1E 104K-T	T	156.5/83.2
C60	4030011600	S.CER C1608 JB 1E 104K-T	T	156.5/84.5
C61	4030011600	S.CER C1608 JB 1E 104K-T	T	141.3/74.0
C62	4030011600	S.CER C1608 JB 1E 104K-T	T	140.0/74.0
C63	4030011600	S.CER C1608 JB 1E 104K-T	T	79.0/80.6
C64	4550008160	S.TAN F931A226MAA	T	155.0/89.4
Eqv.	4550007090	S.TAN TEESVA 1A 226M8R		
C65	4030011600	S.CER C1608 JB 1E 104K-T	T	152.5/91.4
C66	4030011600	S.CER C1608 JB 1E 104K-T	T	138.1/34.3

Eqv.= This component is equivalent to the REF No. component listed above, and may be substituted on parts orders and repairs.

[MAIN UNIT]

REF NO.	PARTS NO.	DESCRIPTION		M.	H/V LOCATION
C67	4010008500	CER	DEBB33D102KA2B (DE0805B102K)		
C68	4030011600	S.CER	C1608 JB 1E 104K-T	T	135.5/82.3
C69	4030011600	S.CER	C1608 JB 1E 104K-T	T	165.2/75.9
C70	4510009790	S.ELE	EEHBB1A101P	T	132.8/38.0
C71	4030011600	S.CER	C1608 JB 1E 104K-T	T	136.8/76.1
C72	4030011600	S.CER	C1608 JB 1E 104K-T	T	140.9/34.8
C73	4030011600	S.CER	C1608 JB 1E 104K-T	T	168.6/50.0
C200	4550007480	S.TAN	F930J106MAABMA	T	144.0/23.9
Eqv.	4550006050	S.TAN	TEESVA 0J 106M8R		
C201	4030017490	S.CER	C1608 JB 1A 105K-T	T	134.7/20.8
C202	4030011600	S.CER	C1608 JB 1E 104K-T	T	130.2/23.7
C203	4030011600	S.CER	C1608 JB 1E 104K-T	T	123.1/28.6
C204	4030006900	S.CER	C1608 JB 1H 103K-T	T	120.3/23.4
C205	4030011600	S.CER	C1608 JB 1E 104K-T	T	134.1/18.7
C206	4030011600	S.CER	C1608 JB 1E 104K-T	T	123.1/23.4
C207	4030011600	S.CER	C1608 JB 1E 104K-T	T	123.1/20.8
C208	4030006860	S.CER	C1608 JB 1H 102K-T	T	114.1/22.1
C210	4510009270	S.ELE	EEHBB1C220UR	T	103.8/25.2
C211	4030011600	S.CER	C1608 JB 1E 104K-T	T	90.4/21.5
C212	4030011600	S.CER	C1608 JB 1E 104K-T	T	75.5/20.5
C213	4030011600	S.CER	C1608 JB 1E 104K-T	T	47.5/20.5
C214	4030011600	S.CER	C1608 JB 1E 104K-T	T	68.5/20.5
C215	4030011600	S.CER	C1608 JB 1E 104K-T	T	40.5/20.5
C216	4030011600	S.CER	C1608 JB 1E 104K-T	T	61.5/20.5
C217	4030011600	S.CER	C1608 JB 1E 104K-T	T	33.5/20.5
C218	4030011600	S.CER	C1608 JB 1E 104K-T	T	54.5/20.5
C219	4030011600	S.CER	C1608 JB 1E 104K-T	T	26.5/20.5
C220	4030011600	S.CER	C1608 JB 1E 104K-T	T	28.2/31.4
C221	4030011600	S.CER	C1608 JB 1E 104K-T	T	24.7/44.9
C222	4030011340	S.CER	C1608 CH 1H 471J-T	T	25.9/38.8
C223	4030011600	S.CER	C1608 JB 1E 104K-T	T	33.7/47.7
C224	4030006900	S.CER	C1608 JB 1H 103K-T	T	36.7/43.1
C225	4030007090	S.CER	C1608 CH 1H 470J-T	T	89.0/51.9
C226	4030011600	S.CER	C1608 JB 1E 104K-T	T	82.3/48.0
C227	4030007130	S.CER	C1608 CH 1H 101J-T	T	84.4/41.1
C228	4030011600	S.CER	C1608 JB 1E 104K-T	T	94.6/32.3
C229	4030006900	S.CER	C1608 JB 1H 103K-T	T	94.6/33.6
C230	4030011600	S.CER	C1608 JB 1E 104K-T	T	86.7/31.1
C231	4030006920	S.CER	C1608 CH 1H 010C-T	T	86.2/39.3
C232	4030006900	S.CER	C1608 JB 1H 103K-T	T	89.0/39.3
C233	4030009980	S.CER	C1608 JB 1H 152K-T	T	91.8/38.0
C234	4030011600	S.CER	C1608 JB 1E 104K-T	T	115.2/36.3
C235	4030011600	S.CER	C1608 JB 1E 104K-T	T	113.1/33.9
C236	4030011600	S.CER	C1608 JB 1E 104K-T	T	109.6/30.2
C237	4030007130	S.CER	C1608 CH 1H 101J-T	T	74.7/38.1
C238	4030011600	S.CER	C1608 JB 1E 104K-T	T	76.0/38.1
C239	4030006860	S.CER	C1608 JB 1H 102K-T	T	67.5/40.9
C240	4030011600	S.CER	C1608 JB 1E 104K-T	T	67.5/43.7
C241	4030011600	S.CER	C1608 JB 1E 104K-T	T	104.2/47.9
C242	4030011600	S.CER	C1608 JB 1E 104K-T	T	105.6/40.5
C243	4030011600	S.CER	C1608 JB 1E 104K-T	T	101.3/38.8
C244	4030017490	S.CER	C1608 JB 1A 105K-T	T	132.1/20.8
C245	4030011600	S.CER	C1608 JB 1E 104K-T	T	101.3/36.0
C246	4030011600	S.CER	C1608 JB 1E 104K-T	T	102.2/31.3
C247	4030011600	S.CER	C1608 JB 1E 104K-T	T	107.0/32.8
C250	4030011340	S.CER	C1608 CH 1H 471J-T	T	113.1/24.5
C251	4030007110	S.CER	C1608 CH 1H 680J-T	T	12.9/79.5
C252	4030011340	S.CER	C1608 CH 1H 471J-T	T	14.2/79.5
C253	4030006860	S.CER	C1608 JB 1H 102K-T	T	15.5/79.5
C254	4030007110	S.CER	C1608 CH 1H 680J-T	T	19.0/79.5
C255	4030011340	S.CER	C1608 CH 1H 471J-T	T	20.3/79.5
C256	4030006860	S.CER	C1608 JB 1H 102K-T	T	21.6/79.5
C261	4030007110	S.CER	C1608 CH 1H 680J-T	T	125.0/3.1
C262	4030011340	S.CER	C1608 CH 1H 471J-T	T	125.0/4.4
C263	4030006860	S.CER	C1608 JB 1H 102K-T	T	125.0/5.7
C264	4030007110	S.CER	C1608 CH 1H 680J-T	T	125.0/7.2
C265	4030011340	S.CER	C1608 CH 1H 471J-T	T	125.0/8.5
C266	4030006860	S.CER	C1608 JB 1H 102K-T	T	125.0/9.8
J1	6510027380	CON	MJ-88H-RD315K(LF)(SN)		
J14	6510019421	S.CON	B8B-ZR-SM4-TF(LF)(SN)	T	143.0/55.0
J200	6510003401	CON	B04B-EH-S(LF)(SN)		
J202	6510011591	CON	B2P-VH(LF)(SN)		
DS1	5040002420	S.LED	SML-310MT T86	T	108.0/87.1
DS2	5040002420	S.LED	SML-310MT T86	T	158.4/77.3
DS3	5040002420	S.LED	SML-310MT T86	T	158.4/78.7
DS4	5040002420	S.LED	SML-310MT T86	T	105.2/87.1
T1	5910001120	S.TRA	TLA-6T133WLF-T	T	157.0/59.5
W1	8900018280	CAB	OPC-1902		
W2	8900018290	CAB	OPC-1903		
EP2	6910013370	S.BEA	BLM18BB221SN1D (BLM11B221SB)	T	140.4/71.9
EP3	6910013370	S.BEA	BLM18BB221SN1D (BLM11B221SB)	T	155.4/73.9
EP4	6910013370	S.BEA	BLM18BB221SN1D (BLM11B221SB)	T	162.0/67.3

## [REG UNIT]

REF NO.	PARTS NO.	DESCRIPTION	M.	H/V LOCATION
IC1	1170000352	S.IC PC357N6J000F	T	35.0/80.7
IC2	1110002861	S.IC TA75S393F(TE85RF)	T	29.1/4.6
IC3	1110003071	S.IC UPC494GS-E1-A	T	29.2/24.3
IC4	1110001821	S.IC UPC1093T-E1-AZ	T	101.0/49.9
IC5	1170000352	S.IC PC357N6J000F	T	90.5/47.7
IC6	1180002020	S.REG BA033FP-E2	T	117.0/77.0
IC11	1110005110	S.IC M62211FP	T	124.0/37.5
Q3	15900003670	S.TRA KRA304-RTK/P	T	27.6/16.8
Q4	1540000550	S.TRA 2SD1664 T100Q	T	50.2/9.8
Eqv.	1540000770	S.TRA 2SD1664L-Q-AB3-R <SLVJ>		
Q5	1520000460	S.TRA 2SB1132 T100 R	T	144.0/32.6
Eqv.	1520000910	S.TRA 2SB1132L-R-AB3-R <SLVJ>		
Q6	1560001740	FET TK40A10K3(Q)		
Q7	1540000550	S.TRA 2SD1664 T100Q	T	73.3/9.8
Eqv.	1540000770	S.TRA 2SD1664L-Q-AB3-R <SLVJ>		
Q8	1520000460	S.TRA 2SB1132 T100 R	T	68.0/9.7
Eqv.	1520000910	S.TRA 2SB1132L-R-AB3-R <SLVJ>		
Q9	1560001740	FET TK40A10K3(Q)		
Q10	1510000501	S.TRA 2SA1162-GR(TE85RF)	T	41.6/76.8
Q11	1590003680	S.TRA KRC402 RTK/P	T	44.5/80.0
Q12	1530002060	S.TRA 2SC4081 T106 R	T	110.0/43.4
Eqv.	1530004140	S.TRA L2SC4081RT1G <SLVJ>		
Q13	1550000100	S.FET 2SJ377 (TE16L1NQ)	T	115.0/50.0
Q16	1520000460	S.TRA 2SB1132 T100 R	T	50.7/75.2
Eqv.	1520000910	S.TRA 2SB1132L-R-AB3-R <SLVJ>		
Q17	1530003900	S.TRA KTC4075 BL-RTK/P	T	48.4/69.3
Q18	1530003900	S.TRA KTC4075 BL-RTK/P	T	54.0/69.5
D1	1790000700	DIO DSA3A1		
D2	1730002611	S.ZEN MAZ8360GML	T	56.0/74.2
D3	1730002321	S.ZEN MAZ8051GML	T	34.2/76.4
D4	1790001730	DIO FMG-26R		
D5	1790001720	DIO FMG-26S		
D6	1750001320	S.DIO KDS4148U RTK/P	T	38.1/75.9
D7	1750001320	S.DIO KDS4148U RTK/P	T	38.1/77.7
D11	1750001320	S.DIO KDS4148U RTK/P	T	113.9/42.6
D12	1750000540	S.DIO RB060L-40 TE-25	T	125.5/57.5
L1	6190001470	COI FK-130G-1020		
L2	6200006190	S.COI BLM21PG300SN1D (BLM21P300S)	T	50.5/6.4
L3	6200006190	S.COI BLM21PG300SN1D (BLM21P300S)	T	73.5/6.4
L4	6190001460	COI HK-14S080-4010		
L11	6170000150	COI LW-16		
R1	7540000340	ABS ERZV05D560		
R5	7030003560	S.RES ERJ3GEYJ 103 V (10K)	T	56.4/78.6
R6	7030003560	S.RES ERJ3GEYJ 103 V (10K)	T	55.6/76.6
R7	7030000580	S.RES MCR10EZJH 47 K (473)	T	54.2/74.2
R8	7030010320	S.RES ERJ3GEYF 153 V (15K)	T	26.5/3.7
R9	7030005250	S.RES ERJ3GEYF 103 V (10K)	T	28.6/2.1
R10	7030004840	S.RES ERJ3GEYF 563 V (56K)	T	33.3/7.5
R11	7030010310	S.RES ERJ3GEYF 223 V (22K)	T	31.5/1.8
R12	7030004870	S.RES ERJ3GEYF 224 V (220K)	T	31.5/4.6
R13	7030003650	S.RES ERJ3GEYJ 563 V (56K)	T	29.5/16.7
R14	7030003490	S.RES ERJ3GEYJ 272 V (2.7K)	T	31.6/16.0
R15	7030003560	S.RES ERJ3GEYJ 103 V (10K)	T	24.3/16.8
R16	7030003560	S.RES ERJ3GEYJ 103 V (10K)	T	23.0/21.4
R17	7030003530	S.RES ERJ3GEYJ 562 V (5.6K)	T	25.7/16.8
R18	7030003600	S.RES ERJ3GEYJ 223 V (22K)	T	26.4/19.0
R19	7030003550	S.RES ERJ3GEYJ 822 V (8.2K)	T	32.2/18.2
R21	7030000380	S.RES MCR10EZJH 1 K (102)	T	43.3/6.1
R22	7030000410	S.RES MCR10EZJH 1.8K (182)	T	46.9/6.1
R23	7030000380	S.RES MCR10EZJH 1 K (102)	T	64.5/11.0
R24	7030000410	S.RES MCR10EZJH 1.8K (182)	T	69.9/6.1
R25	7070000531	RES ERG2SJ 330 (33)		
R26	7030010310	S.RES ERJ3GEYF 223 V (22K)	T	103.3/47.1
R27	7030007220	S.RES ERA3YED 202V (2K)	T	104.9/48.6
R28	7030001570	S.RES MCR18EZJH 4.7K	T	98.9/46.3
R29	7030003440	S.RES ERJ3GEYJ 102 V (1K)	T	95.4/47.1
R31	7030003440	S.RES ERJ3GEYJ 102 V (1K)	T	42.1/80.0
R32	7030003640	S.RES ERJ3GEYJ 473 V (47K)	T	44.1/76.8
R33	7030003440	S.RES ERJ3GEYJ 102 V (1K)	T	45.4/77.0
R34	7030003440	S.RES ERJ3GEYJ 102 V (1K)	T	44.4/73.6
R41	7030003580	S.RES ERJ3GEYJ 153 V (15K)	T	127.3/33.1
R42	7030003680	S.RES ERJ3GEYJ 104 V (100K)	T	129.6/36.8
R43	7030003440	S.RES ERJ3GEYJ 102 V (1K)	T	131.7/37.5
R44	7030001240	S.RES MCR50JZHJ 820 (821)	T	112.5/37.0
R45	7030001200	S.RES MCR50JZHJ 390 (391)	T	112.5/40.1
R46	7030003560	S.RES ERJ3GEYJ 103 V (10K)	T	117.1/44.6
R47	7030003200	S.RES ERJ3GEYJ 100 V (10)	T	113.6/44.6
R48	7030010560	S.RES ERA3YED 302V (3K)	T	132.4/41.0
R49	7030004720	S.RES ERJ3GEYF 102 V (1K)	T	131.7/38.9
R51	7030003610	S.RES ERJ3GEYJ 273 V (27K)	T	51.1/71.7
R52	7030003610	S.RES ERJ3GEYJ 273 V (27K)	T	51.1/70.5
R53	7030003560	S.RES ERJ3GEYJ 103 V (10K)	T	51.8/68.5
R54	7030003440	S.RES ERJ3GEYJ 102 V (1K)	T	48.3/67.1
C1	4510009800	ELE 50 ME 470 CA		
C2	4030006880	S.CER C1608 JB 1H 472K-T	T	84.5/63.9
C3	4030006880	S.CER C1608 JB 1H 472K-T	T	59.9/69.5
C4	4510007360	ELE 50 ME 1000 AX		
C5	4030006880	S.CER C1608 JB 1H 472K-T	T	57.9/69.5
C6	4030006880	S.CER C1608 JB 1H 472K-T	T	58.7/72.3
C10	4030011600	S.CER C1608 JB 1E 104K-T	T	34.5/78.0
C12	4030006900	S.CER C1608 JB 1H 103K-T	T	50.6/68.5
C13	4510009780	S.ELE EEEHB1V220P	T	30.6/33.2

Eqv.= This component is equivalent to the REF No. component listed above, and may be substituted on parts orders and repairs.

## [REG UNIT]

REF NO.	PARTS NO.	DESCRIPTION	M.	H/V LOCATION
C14	4550007590	S.TAN F931V474MAABMA	T	33.3/3.0
Eqv.	4550003250	S.TAN TEESVA 1V 474M8R		
C15	4030006900	S.CER C1608 JB 1H 103K-T	T	25.7/5.8
C16	4510008980	S.ELE EEEHB1C470P	T	28.2/10.9
C17	4030006860	S.CER C1608 JB 1H 102K-T	T	30.9/18.2
C18	4030011600	S.CER C1608 JB 1E 104K-T	T	23.0/27.4
C19	4510008980	S.ELE EEEHB1C470P	T	23.4/33.2
C21	4030006900	S.CER C1608 JB 1H 103K-T	T	53.1/7.1
C22	4030006900	S.CER C1608 JB 1H 103K-T	T	76.1/6.9
C23	4510007360	ELE 50 ME 1000 AX		
C25	4010008490	CER DEA1X3D471JA3B (DE1407SL471J)		
C26	4510007351	ELE 35 ME 1000 AX		
C27	4030006900	S.CER C1608 JB 1H 103K-T	T	97.3/49.4
C31	4510009270	S.ELE EEEHB1C220UR	T	124.3/78.7
C32	4030011600	S.CER C1608 JB 1E 104K-T	T	121.2/78.9
C33	4030011600	S.CER C1608 JB 1E 104K-T	T	112.8/78.9
C34	4510009270	S.ELE EEEHB1C220UR	T	109.7/78.7
C35	4030006900	S.CER C1608 JB 1H 103K-T	T	149.5/68.6
C36	4030006900	S.CER C1608 JB 1H 103K-T	T	154.5/68.6
C37	4030006900	S.CER C1608 JB 1H 103K-T	T	159.5/68.6
C38	4030006900	S.CER C1608 JB 1H 103K-T	T	162.5/68.6
C39	4030006900	S.CER C1608 JB 1H 103K-T	T	167.0/68.6
C41	4030006900	S.CER C1608 JB 1H 103K-T	T	144.5/68.6
C42	4510007351	ELE 35 ME 1000 AX		
C43	4030006900	S.CER C1608 JB 1H 103K-T	T	129.6/39.6
C44	4030010760	S.CER C1608 CH 1H 331J-T	T	118.4/35.6
C45	4030006900	S.CER C1608 JB 1H 103K-T	T	120.0/69.0
C46	4550007490	S.TAN F930G106MAABMA	T	131.6/34.3
Eqv.	4550006010	S.TAN TEESVA OG 106M8R		
C47	4030006860	S.CER C1608 JB 1H 102K-T	T	117.1/42.6
C48	4510007340	ELE 16 ME 470 AX		
C49	4030006900	S.CER C1608 JB 1H 103K-T	T	124.0/68.5
C51	4030007110	S.CER C1608 CH 1H 680J-T	T	154.2/42.5
C52	4030011340	S.CER C1608 CH 1H 471J-T	T	155.6/42.5
C53	4030006860	S.CER C1608 JB 1H 102K-T	T	157.0/42.5
C54	4030007110	S.CER C1608 CH 1H 680J-T	T	159.0/42.5
C55	4030011340	S.CER C1608 CH 1H 471J-T	T	160.4/42.5
C56	4030006860	S.CER C1608 JB 1H 102K-T	T	161.8/42.5
J1	6510011451	CON B5P-VH(LF)(SN)		
J2	6510011591	CON B2P-VH(LF)(SN)		
J3	6510003471	CON B11B-EH-S(LF)(SN)		
F1	5210000051	FUS FGB 3A PBF (FGB0 125V)		
F2	5220000021	HOL S-N5051#02F		
F3	5220000021	HOL S-N5051#02F		
S1	2260000980	SWI SKHHLPO14A		
S2	2260000980	SWI SKHHLPO14A		
T1	5910000890	TRA TO-49		

M.=Mounted side (T: Mounted on the Top side, B: Mounted on the Bottom side)  
S.=Surface mount

**[FILTER UNIT]**

REF NO.	PARTS NO.	DESCRIPTION		M.	H/V LOCATION
FI1	2040001440	S.LC	NFE31PT152Z1E9L (NFM60R20T152)	T	19.0/30.4
FI2	2040001440	S.LC	NFE31PT152Z1E9L (NFM60R20T152)	T	19.0/33.7
FI3	2040001440	S.LC	NFE31PT152Z1E9L (NFM60R20T152)	T	19.0/37.0
C1	4510007330	ELE	50 ME 33HWN		
C3	4510009800	ELE	50 ME 470 CA		
C4	4510007330	ELE	50 ME 33HWN		
C6	4030006900	S.CER	C1608 JB 1H 103K-T	T	22.0/30.4
C7	4030006860	S.CER	C1608 JB 1H 102K-T	T	23.4/30.4
C8	4030011340	S.CER	C1608 CH 1H 471J-T	T	24.8/30.4
J1	6510011451	CON	B5P-VH(LF)(SN)		

Eqv.= This component is equivalent to the REF No. component listed above, and may be substituted on parts orders and repairs.

M.=Mounted side (T: Mounted on the Top side, B: Mounted on the Bottom side)  
S.=Surface mount

## SECTION 4

## MECHANICAL PARTS

### [CHASSIS PARTS]

REF NO.	ORDER NO.	DESCRIPTION	QTY.
J1	6510026561	N-04-5P-12C-AP-RH 3T1356Z	1
W1**	8900018300	OPC-1904	1
W2**	8900010590	OPC-1074 <LIA>	1
MP1	8510019230	3173 R-CASE	1
MP2	8930074560	3098 TERMINAL SEAL (TOT)	1
MP3	8510019270	3172 EARTH PLATE	1
MP4	8810008661	PHBT M3 X 8 NI-ZC3	2
MP5	8810008661	PHBT M3 X 8 NI-ZC3	5
MP6	8930074670	3123 IC CLIP	2
MP7	8810008661	PHBT M3 X 8 NI-ZC3	4
MP8	8810006360	SETSCREWA M3 X 8 SUS	4
MP11	8930074150	3098 MAIN SEAL (TOT)	1
MP12	8930074210	3098 ANGLE	1
MP13	8930058780	2577 SHEET	1
MP14	8810000580	PH M3 X 6 SUS	9
MP15	8930051430	O-RING (AA) (TOP)	2
MP16	8850002100	FLAT WASHER M5 (5X10X1.0)SUS	2
MP17	8810010030	SETSCREWC M5 X 8 SUS	2

### [MAIN UNIT]

REF NO.	ORDER NO.	DESCRIPTION	QTY.
J1	6510027380	MJ-88H-RD315K (LF) (SN)	1
J14*	6510019421	B8B-ZR-SM4-TF (LF) (SN)	1
J200	6510003401	B04B-EH-S (LF) (SN)	1
J202	6510011591	B2P-VH (LF) (SN)	1
T1*	5910001120	TLA-6T133WLF-T	1
W1**	8900018280	OPC-1902	1
W2**	8900018290	OPC-1903	1

### [REG UNIT]

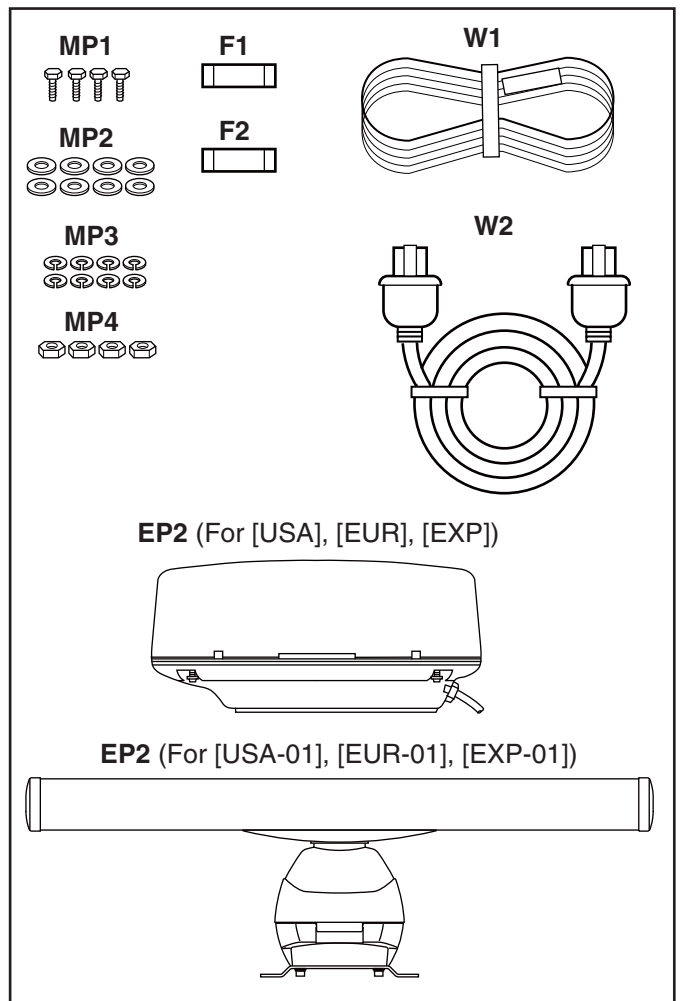
REF NO.	ORDER NO.	DESCRIPTION	QTY.
J1	6510011451	B5P-VH (LF) (SN)	1
J2	6510011591	B2P-VH (LF) (SN)	1
J3	6510003471	B11B-EH-S (LF) (SN)	1
F1	5210000051	FGB 3A PBF (FGB0 125V)	1
F2	5220000021	S-N5051#02F	1
F3	5220000021	S-N5051#02F	1
S1	2260000980	SKHHL P014A	1
S2	2260000980	SKHHL P014A	1
T1	5910000890	TO-49	1
EP2	9021002003	ILLUX TUBE 1.5 L=5MM	2
EP3	9021002003	ILLUX TUBE 1.5 L=5MM	2

### [FILTER UNIT]

REF NO.	ORDER NO.	DESCRIPTION	QTY.
J1	6510011451	B5P-VH (LF) (SN)	1

### [ACCESSORIES]

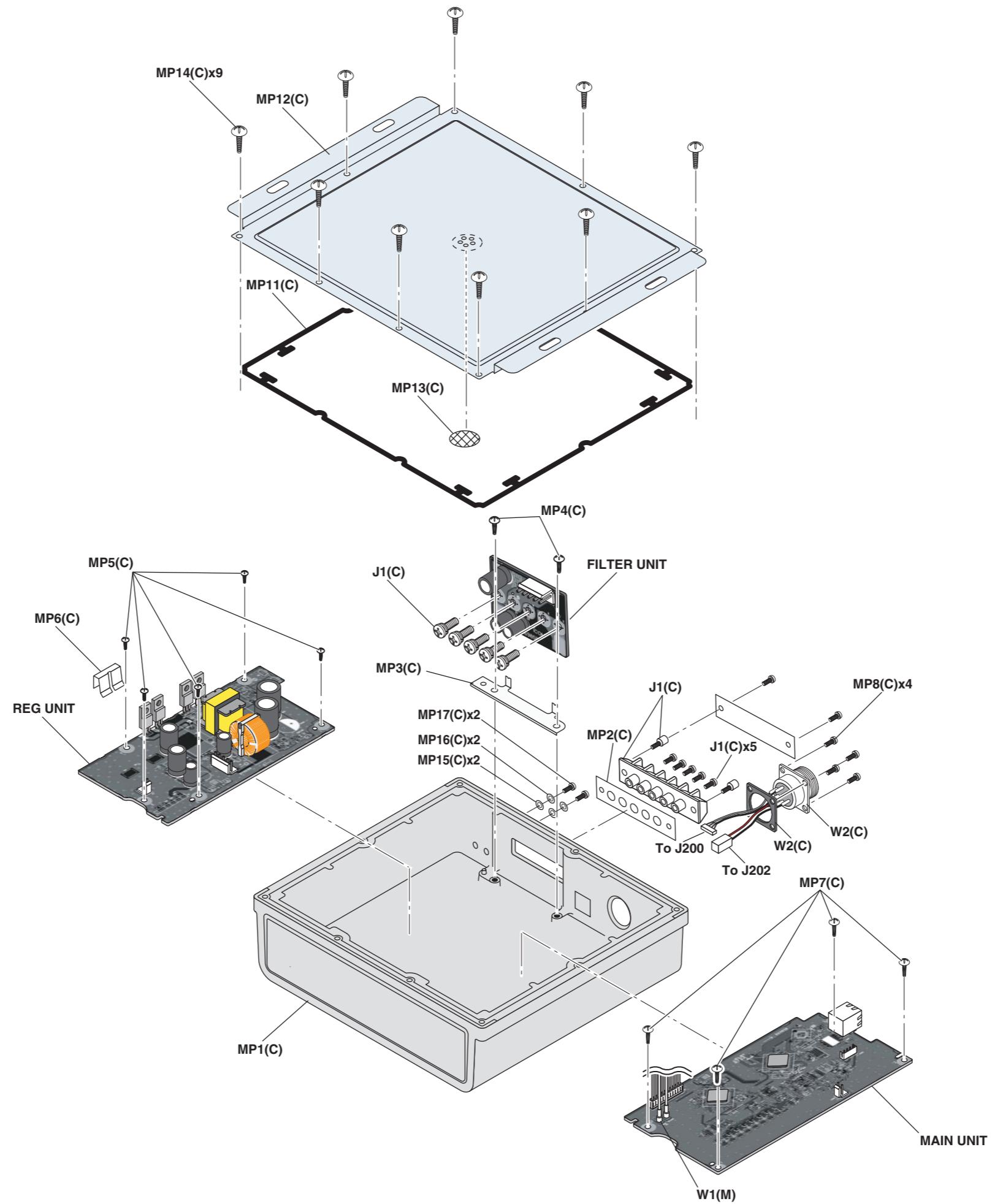
REF NO.	ORDER NO.	DESCRIPTION	QTY.
F1	5210000071	FGB 10A PBF (FGB0 125V)	1
F2	5210000061	FGB 5A PBF (FGB0 125V)	1
W1	8900018870	OPC-1980	1
W2	8900018410	OPC-1927 W/COVER <WSE>	1
EP2	(Optional)	EX-2714 #31 RADOME [USA]	1
	(Optional)	EX-2714 #32 RADOME [EUR]	1
	(Optional)	EX-2714 #33 RADOME [EXP]	1
	(Optional)	EX-2780 #31 OPEN [USA-01]	1
	(Optional)	EX-2780 #32 OPEN [EUR-01]	1
	(Optional)	EX-2780 #33 OPEN [EXP-01]	1
MP1	8810010970	HEX BOLT M5 X30 SUS	4
MP2	8850000180	FLAT WASHER M 5 SUS	8
MP3	8850000500	S-WASHER M 5 SUS	8
MP4	8830000250	NUT M 5 SUS	4



\*: Refer to "BOARD LAYOUTS" for the location.

\*\* : Refer to "GENERAL WIRING" for the connection

**Screw abbreviations** A, B0, BT: Self-tapping PH: Pan head ZK: Black NI-ZU: Nickel-Zinc SUS: Stainless



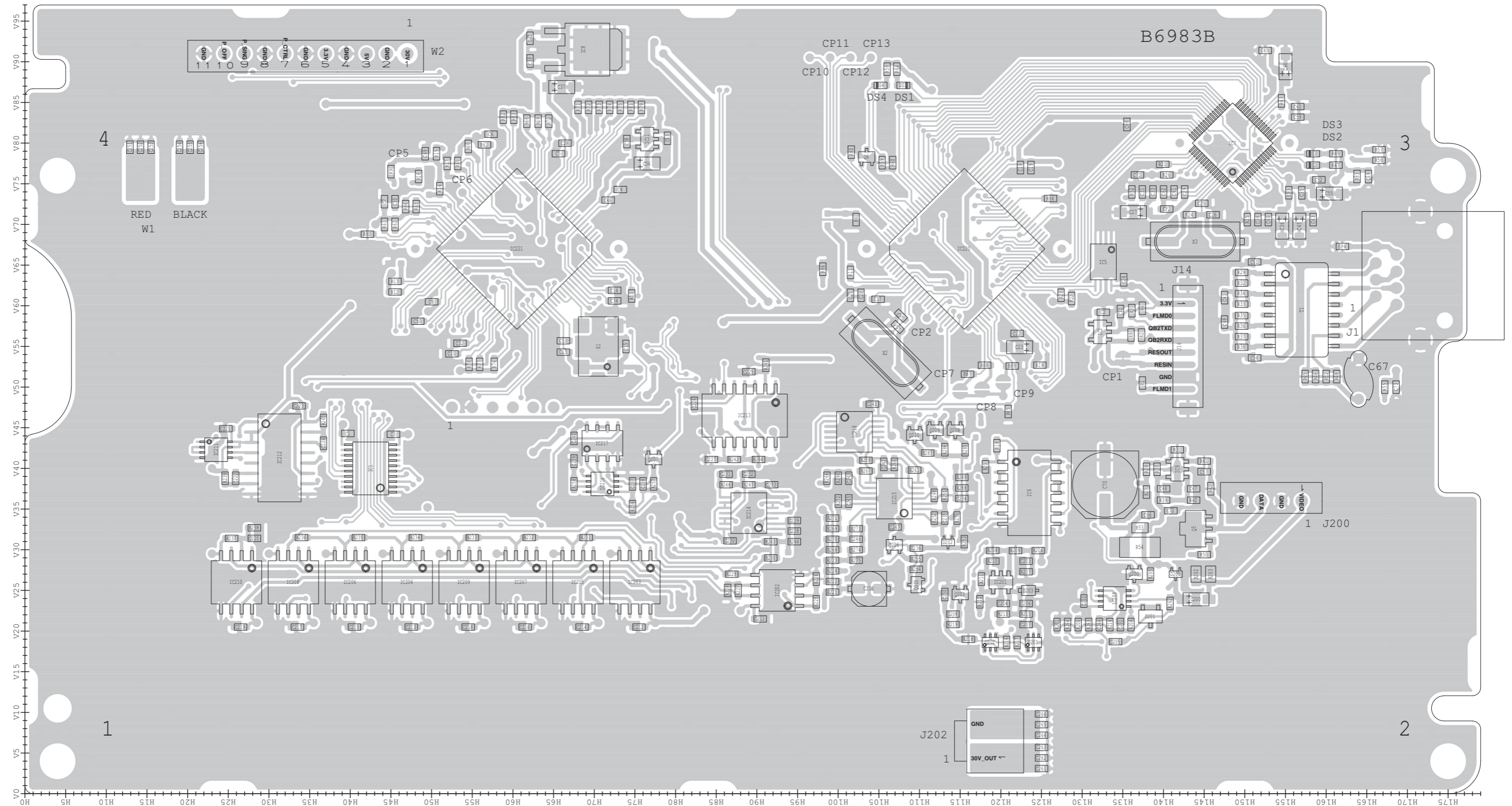
**Unit abbreviations**  
 (C): CHASSIS PARTS  
 (M): MAIN UNIT

## SECTION 5 BOARD LAYOUTS

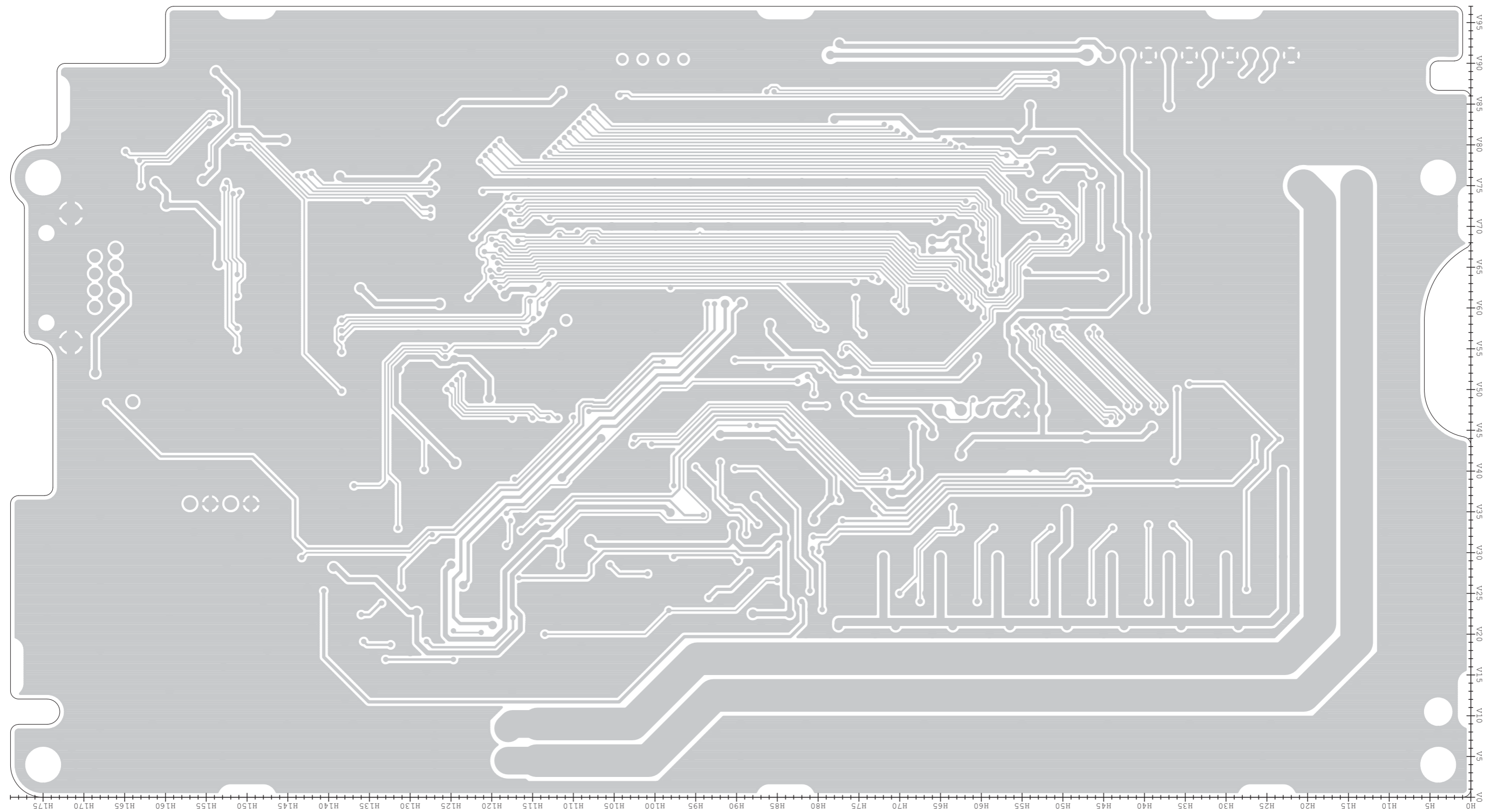
## SECTION 5 BOARD LAYOUTS

The combination of top side and bottom side of this page shows the actual configuration of P.C. board.

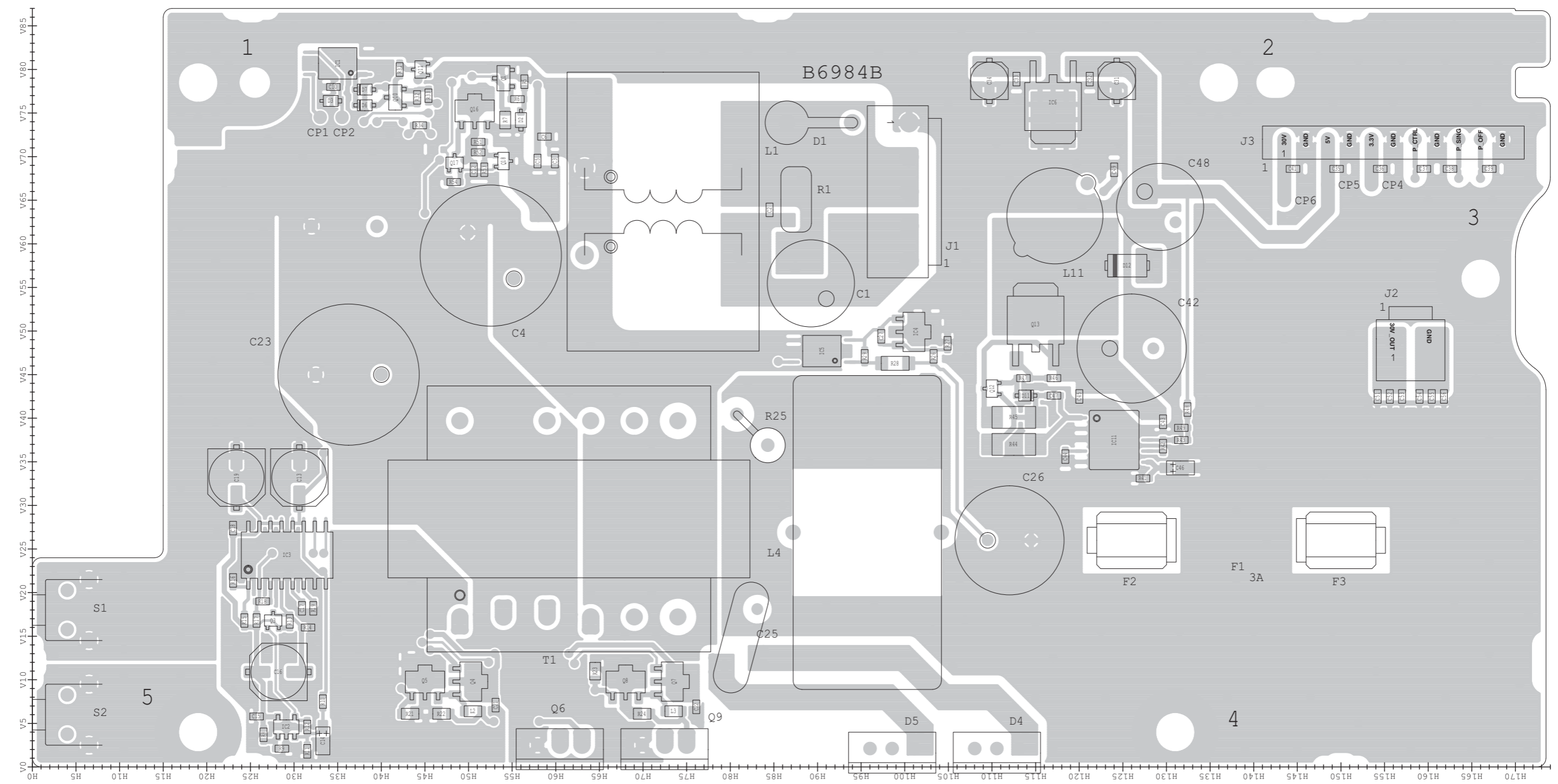
- **MAIN UNIT  
(TOP VIEW)**



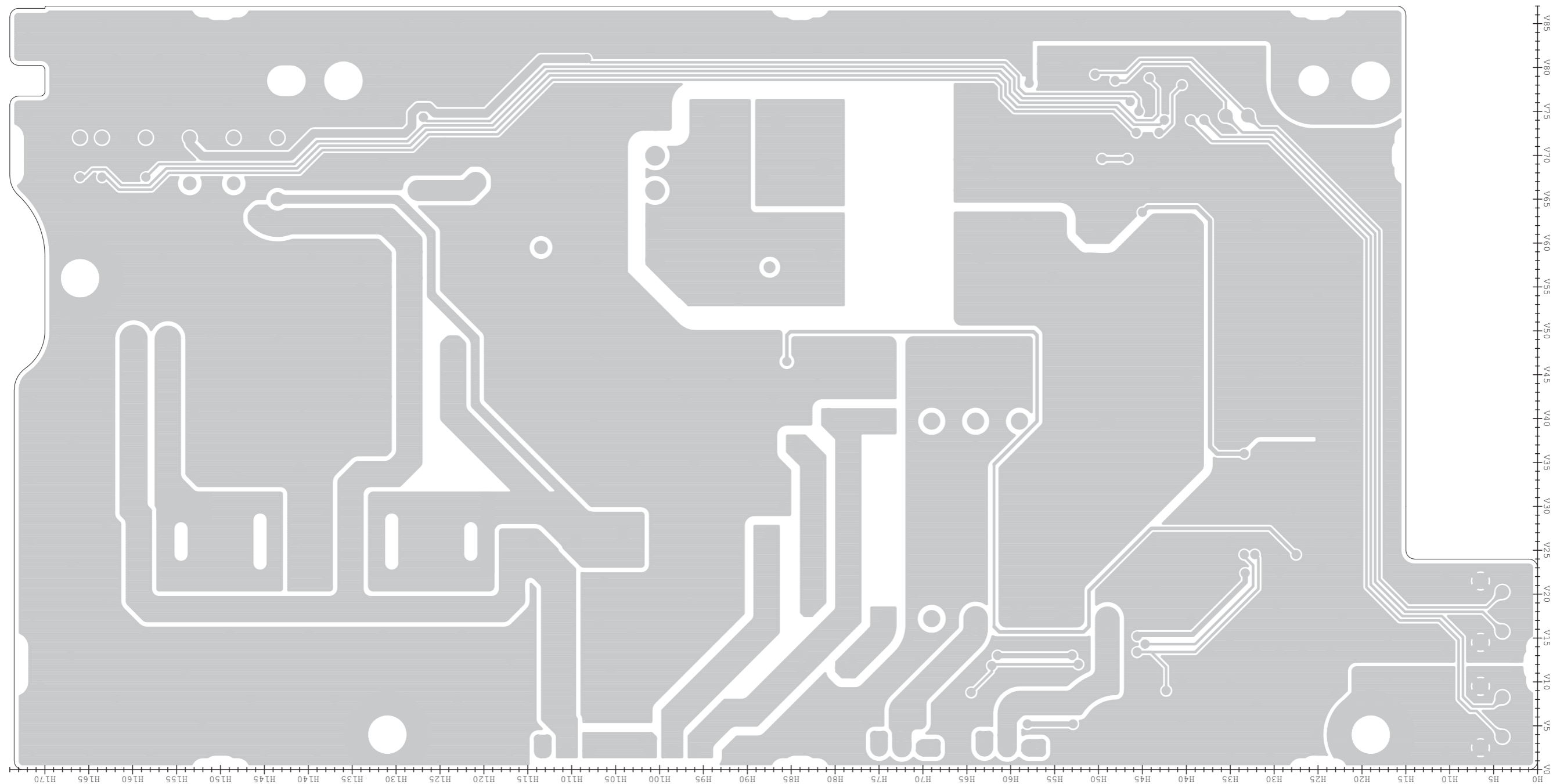
• MAIN UNIT  
(BOTTOM VIEW)



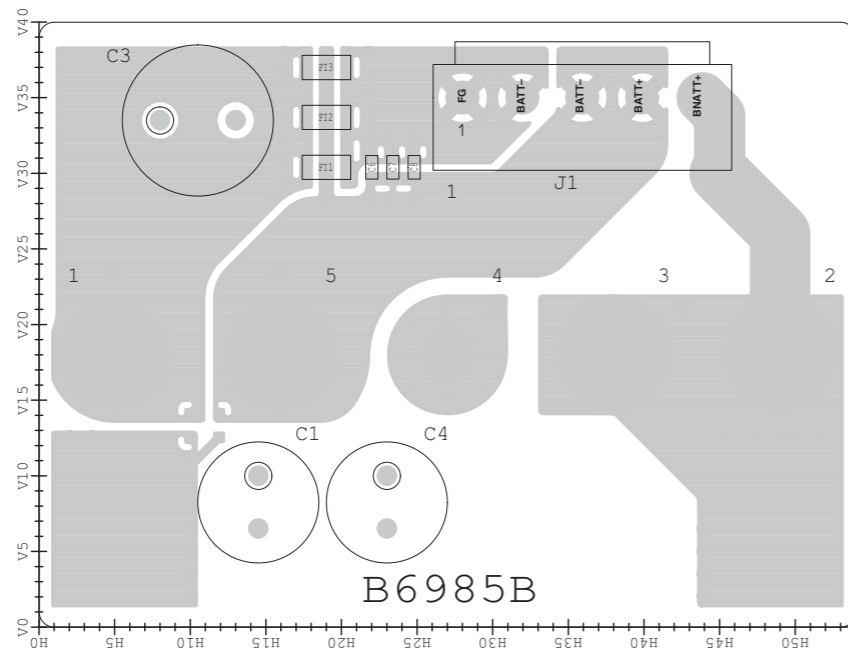
• REG UNIT  
(TOP VIEW)



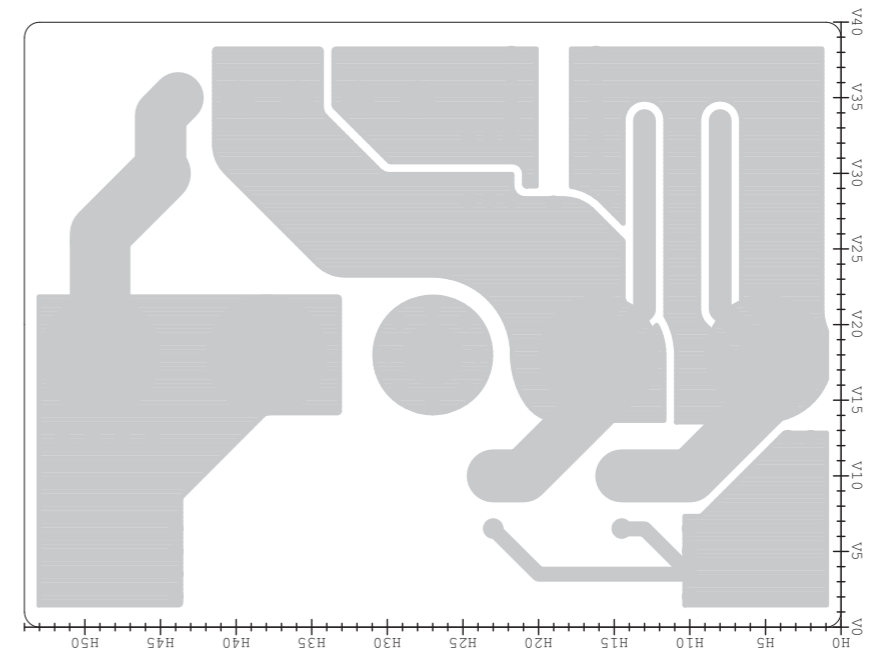
• REG UNIT  
(BOTTOM VIEW)



- **FILTER UNIT  
(TOP VIEW)**

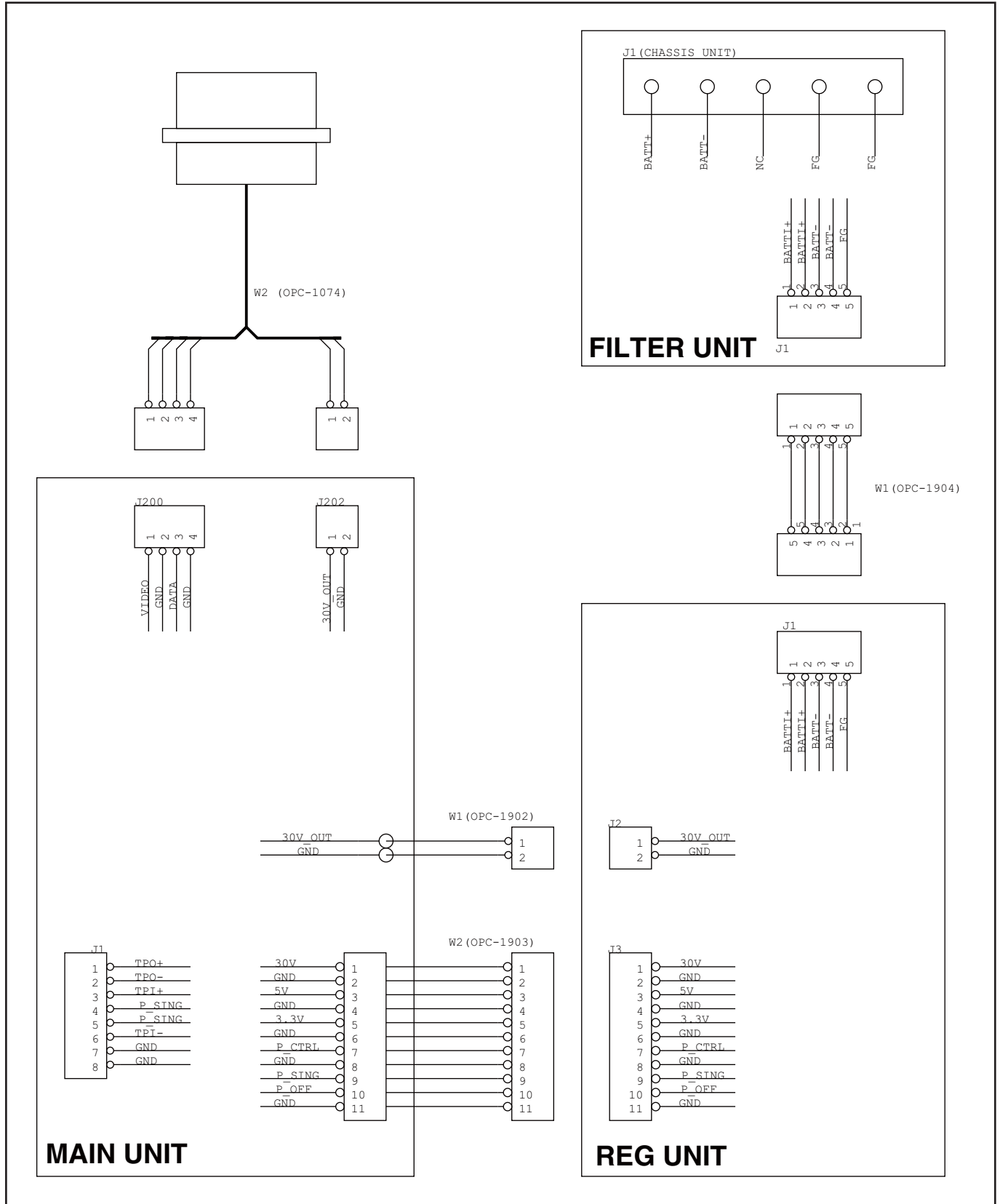


- **FILTER UNIT  
(BOTTOM VIEW)**



## BLOCK DIAGRAM

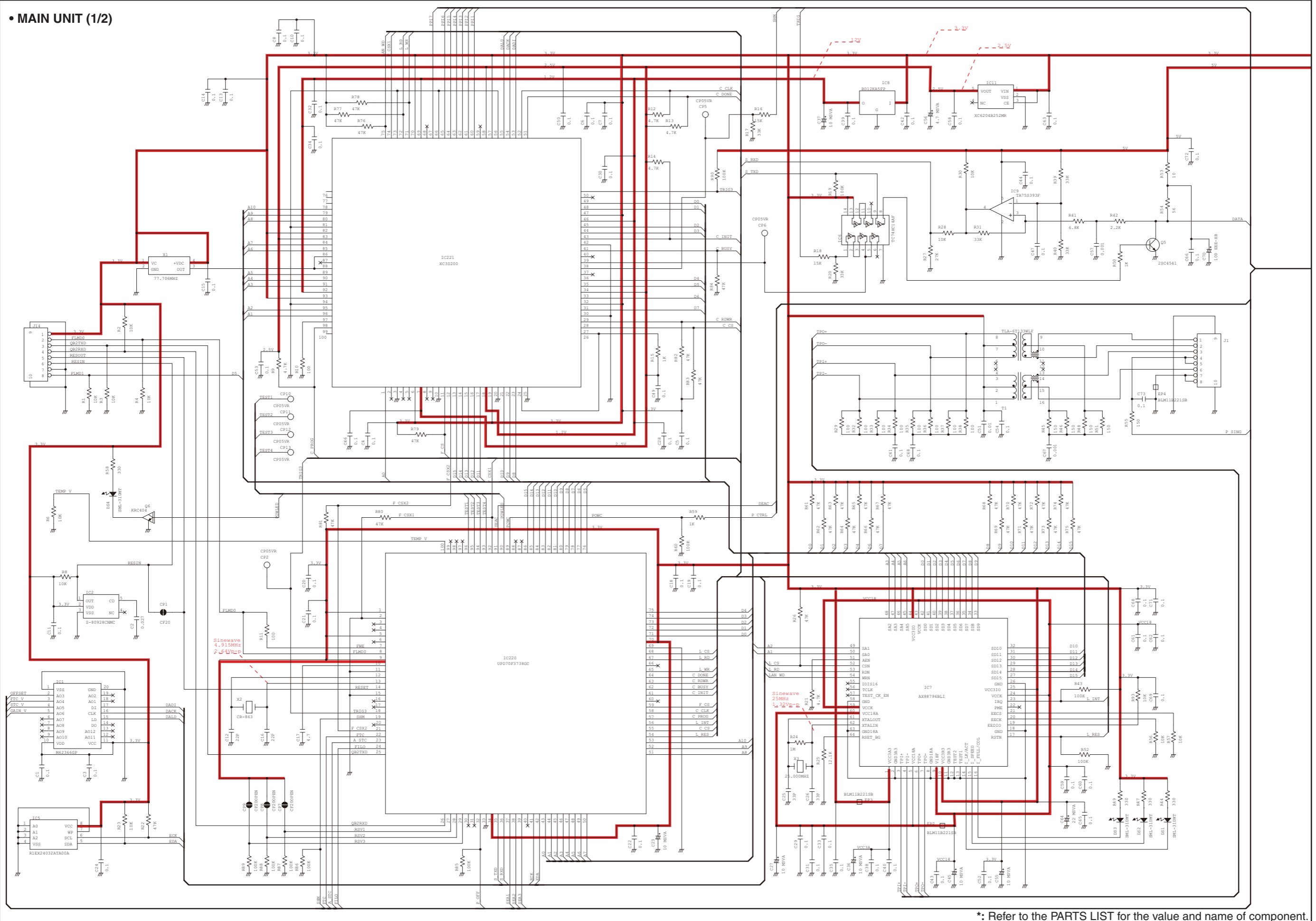




# SECTION 8

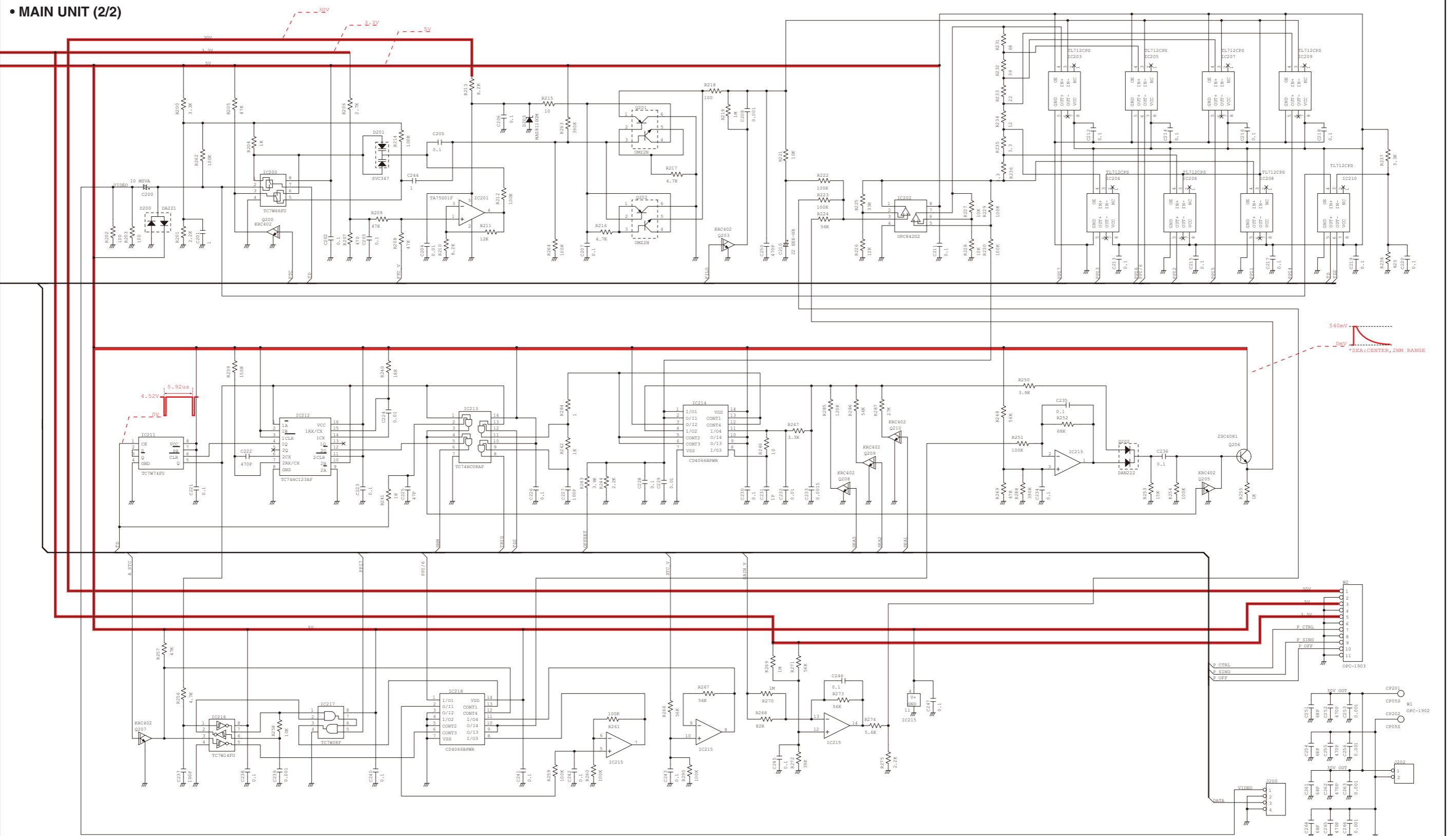
# VOLTAGE DIAGRAM

## • MAIN UNIT (1/2)



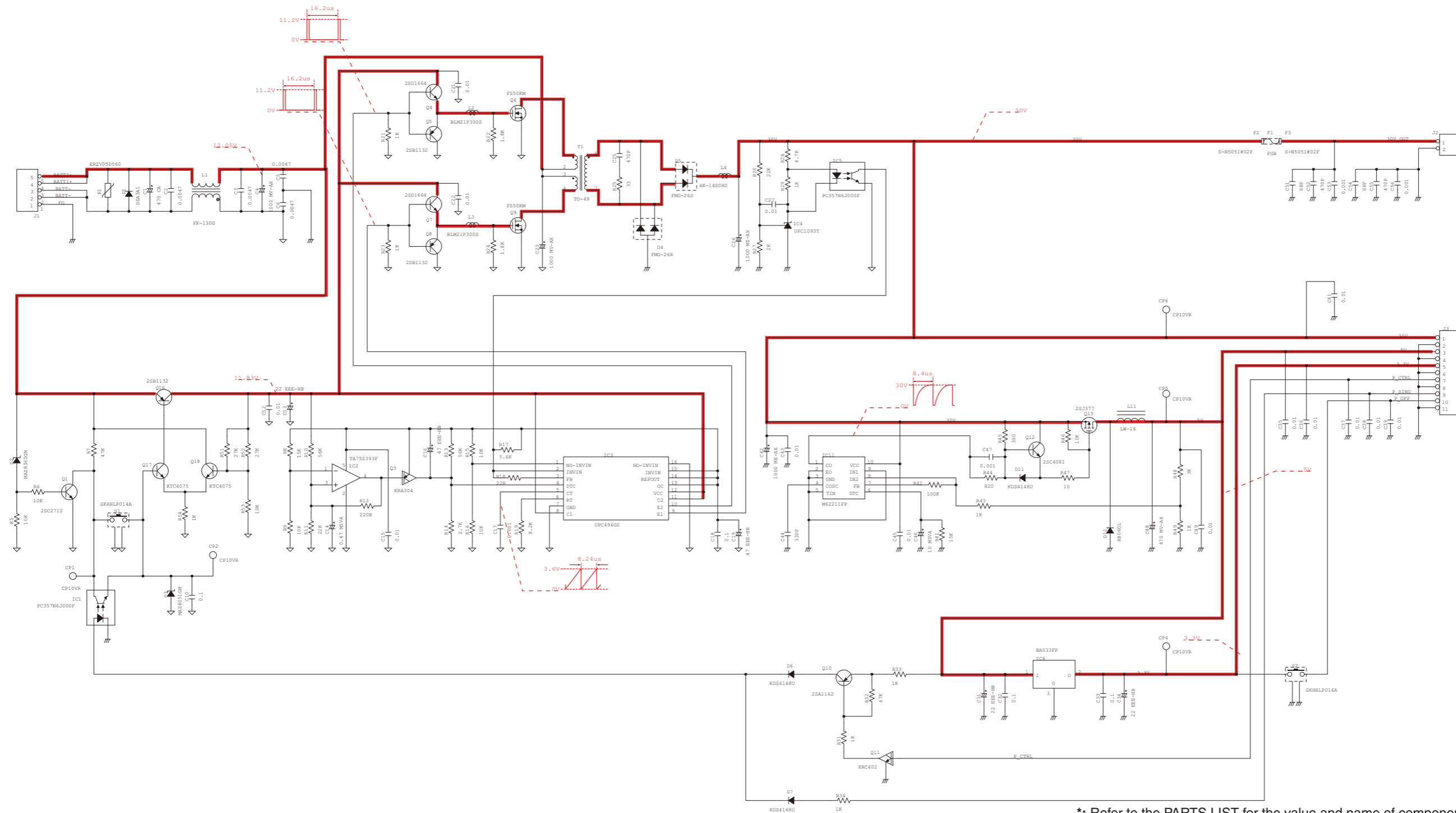
\*: Refer to the PARTS LIST for the value and name of component.

- **MAIN UNIT (2/2)**



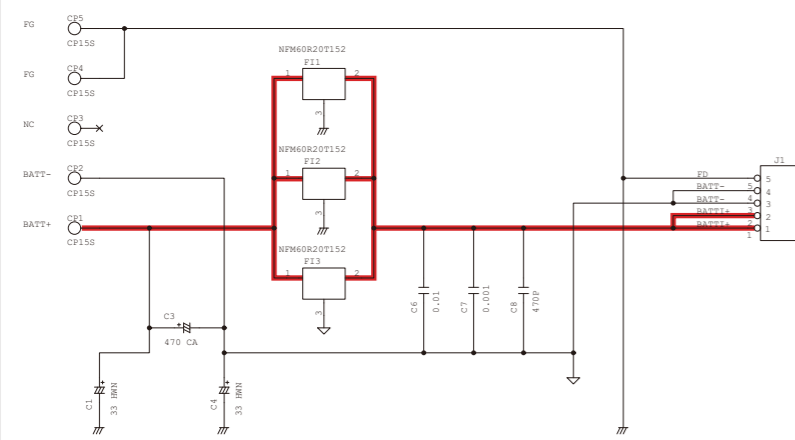
\*: Refer to the PARTS LIST for the value and name of component.

- REG UNIT



\*: Refer to the PARTS LIST for the value and name of component.

- **FILTER UNIT**



## Icom Inc.

1-1-32, Kamiminami, Hirano-ku, Osaka 547-0003, Japan  
Phone : +81 (06) 6793 5302  
Fax : +81 (06) 6793 0013  
URL : <http://www.icom.co.jp/world/index.html>

### Icom America Inc.

<Corporate Headquarters>  
2380 116th Avenue N.E., Bellevue, WA 98004, U.S.A.  
Phone : +1 (425) 454-8155 Fax : +1 (425) 454-1509  
URL : <http://www.icomamerica.com>  
E-mail : [sales@icomamerica.com](mailto:sales@icomamerica.com)  
<Customer Service>  
Phone : +1 (425) 454-7619

### Icom Canada

Glenwood Centre #150-6165  
Highway 17 Delta, B.C., V4K 5B8, Canada  
Phone : +1 (604) 952-4266 Fax : +1 (604) 952-0090  
URL : <http://www.icomcanada.com>  
E-mail : [info@icomcanada.com](mailto:info@icomcanada.com)

### Icom (Australia) Pty. Ltd.

Unit 1 / 103 Garden Road, Clayton VIC 3168 Australia  
Phone : +61 (03) 9549-7500 Fax : +61 (03) 9549-7505  
URL : <http://www.icom.net.au>  
E-mail : [sales@icom.net.au](mailto:sales@icom.net.au)

### Icom New Zealand

146A Harris Road, East Tamaki,  
Auckland, New Zealand  
Phone : +64 (09) 274 4062 Fax : +64 (09) 274 4708  
URL : <http://www.icom.co.nz>  
E-mail : [inquiries@icom.co.nz](mailto:inquiries@icom.co.nz)

### Beijing Icom Ltd.

10C07, Long silver Mansion, No.88, Yong Ding  
Road, Haidian District, Beijing, 100039, China  
Phone : +86 (010) 5889 5391/5392/5393  
Fax : +86 (010) 5889 5395  
URL : <http://www.bjicom.com>  
E-mail : [bjicom@bjicom.com](mailto:bjicom@bjicom.com)

### Icom (Europe) GmbH

Communication Equipment  
Auf der Krautweide 24  
65812 Bad Soden am Taunus, Germany  
Phone : +49 (6196) 76685-0 Fax : +49 (6196) 76685-50  
URL : <http://www.icomeurope.com>  
E-mail : [info@icomeurope.com](mailto:info@icomeurope.com)

### Icom Spain S.L

Ctra. Rubi, No. 88 Bajos A 08174, Sant Cugat del Valles, Barcelona, Spain  
Phone : +34 (93) 590 26 70 Fax : +34 (93) 589 04 46  
URL : <http://www.icomspain.com>  
E-mail : [icom@icomspain.com](mailto:icom@icomspain.com)

### Icom (UK) Ltd.

Blacksole House, The Boulevard, Altira Business Park, Herne Bay, CT6 6GZ, UK  
Phone : +44 (01227) 741741 Fax : +44 (01227) 741742  
URL : <http://www.icomuk.co.uk>  
E-mail : [info@icomuk.co.uk](mailto:info@icomuk.co.uk)

### Icom France s.a.s.

Zac de la Plaine  
1 Rue Brindejone des Moulinais BP 5804  
31505 Toulouse Cedex, France  
Phone : +33 (5) 61 36 03 03 Fax : +33 (5) 61 36 03 00  
URL : <http://www.icom-france.com>  
E-mail : [icom@icom-france.com](mailto:icom@icom-france.com)

### Asia Icom Inc.

6F No.68, Sec. 1 Cheng-Teh Road, Taipei, Taiwan, R.O.C.  
Phone : +886 (02) 2559 1899 Fax : +886 (02) 2559 1874  
URL : <http://www.asia-icom.com>  
E-mail : [sales@asia-icom.com](mailto:sales@asia-icom.com)

### Icom Polska

81-850 Sopot, ul. 3 Maja 54, Poland  
Phone : +48 (58) 550 7135 Fax : +48 (58) 551 0484  
E-mail : [icompolska@icompolska.com.pl](mailto:icompolska@icompolska.com.pl)

Count on us!